

REVISION

A	MS	K Ashley
2/21/2011	ECN-148957	

RELEASE FOR PRODUCTION

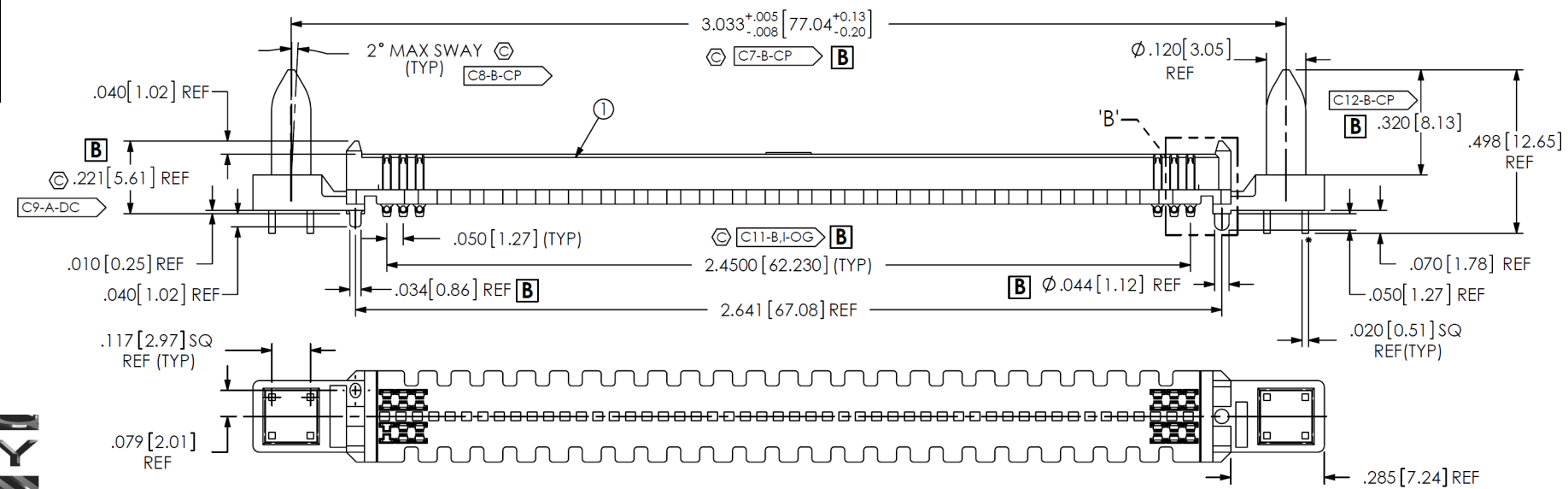
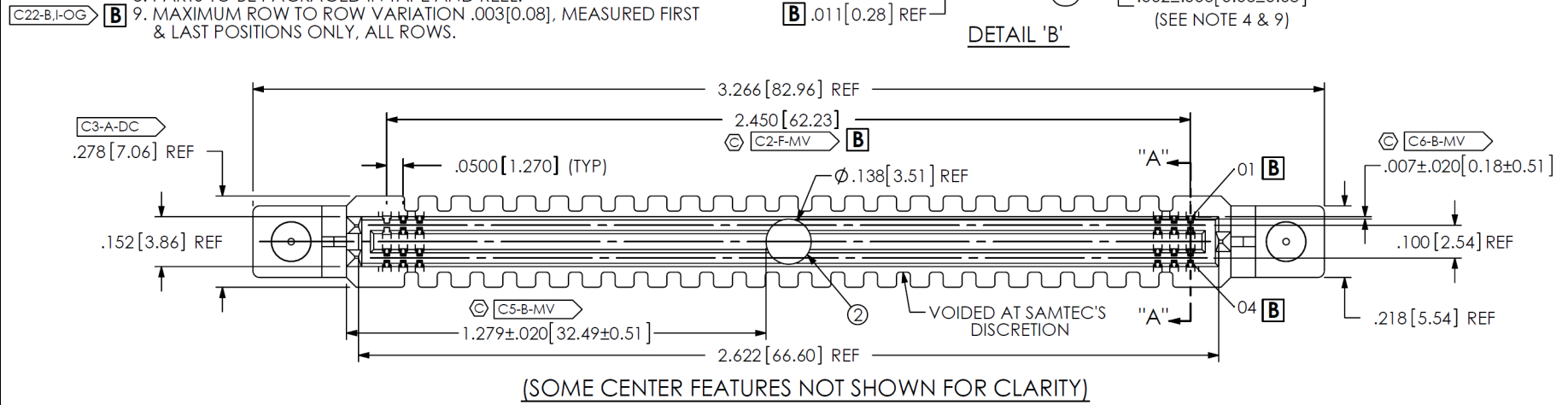
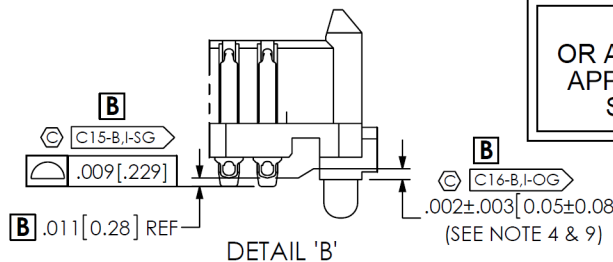
B	JS	T WILD
8/3/2013	ECN-209022	

TOP VIEW: DEL C1, CHG 2.450 TO 2.4500, ADD .01" & .04"; FRONT VIEW: CHG .181 TO .221 REF, CHG .034 TO .034 REF, DEL C10 & C13, CHG C11-F-MV TO C11-B-I-OG, CHG DIA .044 TO DIA .044 REF, CHG C12-B-MV TO C12-B-CP, DET 'B': DEL .0270 (SEE NOTE 4) & DEL C14, CHG C15-F-OG TO C15-B-I-SG, ADD .011 REF, CHG .004 (SEE NOTE 4) TO .002 +/- .003 (SEE NOTE 4 & 9), CHG C16-B-MV TO C16-B-I-OG; NOTES: CHG NOTE 3 FROM "MINIMUM PUSHOUT FORCE: 0.75 LBS." TO "MINIMUM PUSHOUT FORCE: 0.50 LBS.", CHG NOTE 4 FROM "DIMENSION ... ALL FOUR CORNERS ... TO DIMENSION C16 MUST BE ... FOR PROCESS.", DEL NOTE 7 "SOLDER CHARGE VOLUME ...", ADD NOTE 9 & C22; BOM - ITEM 1: CHG MATERIAL FROM "TERMINAL: COPPER ALLOY" TO "TERMINAL: COPPER ALLOY/LEAD FREE SOLDER" & ADD C23; MATERIAL BLOCK: DEL "SOLDER COMPOSITION ...", SHT 2, SECT "A": ADD (TYP) TO .056 +.002/- .004, CHG C17-B-MV TO C17-B-I-OG, CHG .016 +/- .003 (TYP) TO .0175 +/- .0030 (TYP) & CHG C18-B-MV TO C18-D-AM, CHG .044 (TYP) TO .0470/.0410 (TYP), CHG .056 +/- .003 TO .0590/.0530 & CHG C20-B-MV TO C20-B-I-OG, ADD .186 (INCL. K DOT) & C21; ADD CPC INSPECTION TABLE.

NOTES:

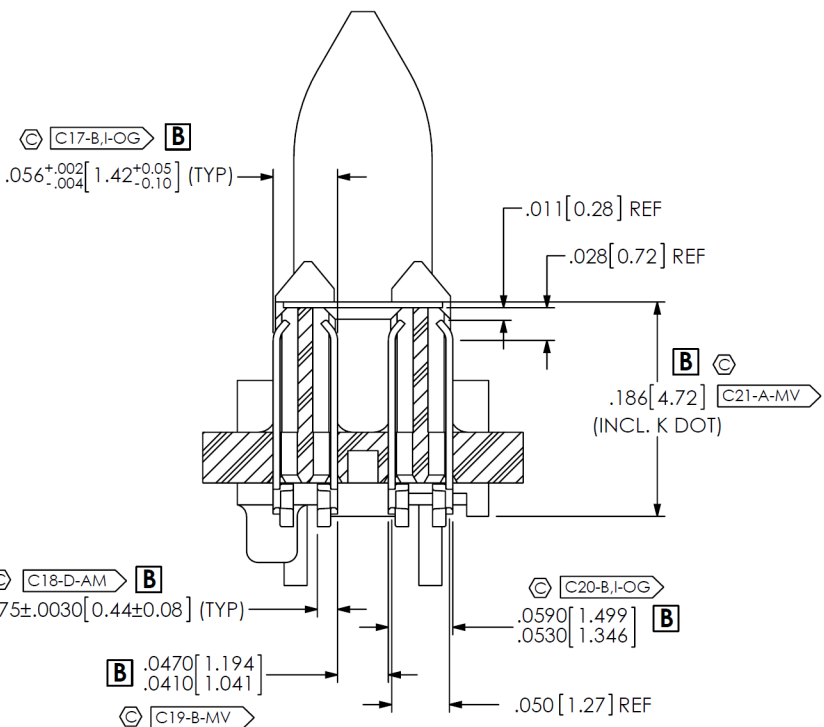
1. STANDARD PART SET UP AS ASP FOR VITA74.
2.  $\text{\textcircled{C}}$  REPRESENTS A CRITICAL DIMENSION.
3. MINIMUM PUSHOUT FORCE: 0.50 LBS.
4. DIMENSION C16 MUST BE MEASURED USING INSPECTION FIXTURE AT-1817-836-1, USE CO-AU-WI-2003-M FOR PROCESS.
5. ATTACH LABEL "SEAX-0001" TO EACH TAPE & REEL PACKAGE.
6. SEE RECOMMENDED FOOTPRINT DRAWING FOR STENCIL REQUIREMENTS.
7. NOTE DELETED.
8. PARTS TO BE PACKAGED IN TAPE AND REEL.
9. MAXIMUM ROW TO ROW VARIATION .003[0.08], MEASURED FIRST & LAST POSITIONS ONLY, ALL ROWS.

DO NOT UPDATE OR ADD REVISION WITHOUT APPROVAL THROUGH THE STANDARDS GROUP

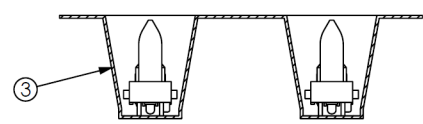
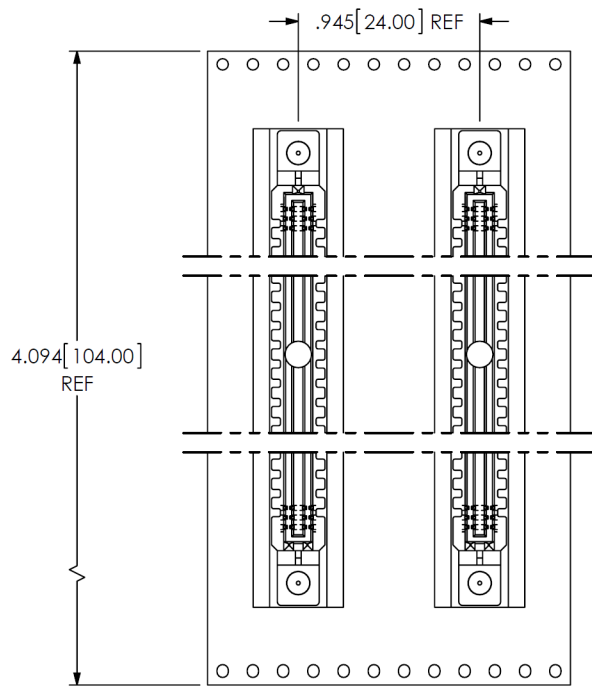


UNLESS OTHERWISE SPECIFIED, DIMENSIONS ARE IN INCHES. TOLERANCES ARE: DECIMALS ANGLES .XX: ±.01 [.3] .XXX: ±.005 [.13] .XXXX: ±.0020 [.051]	PROPRIETARY NOTE THIS DOCUMENT CONTAINS INFORMATION CONFIDENTIAL AND PROPRIETARY TO SAMTEC, INC. AND SHALL NOT BE REPRODUCED OR TRANSFERRED TO OTHER DOCUMENTS OR DISCLOSED TO OTHERS OR USED FOR ANY PURPOSE OTHER THAN THAT WHICH IT WAS OBTAINED WITHOUT THE EXPRESSED WRITTEN CONSENT OF SAMTEC, INC.	520 PARK EAST BLVD, NEW ALBANY, IN 47150 PHONE: 812-944-6733 FAX: 812-948-5047 e-Mail: info@SAMTEC.com code 53322

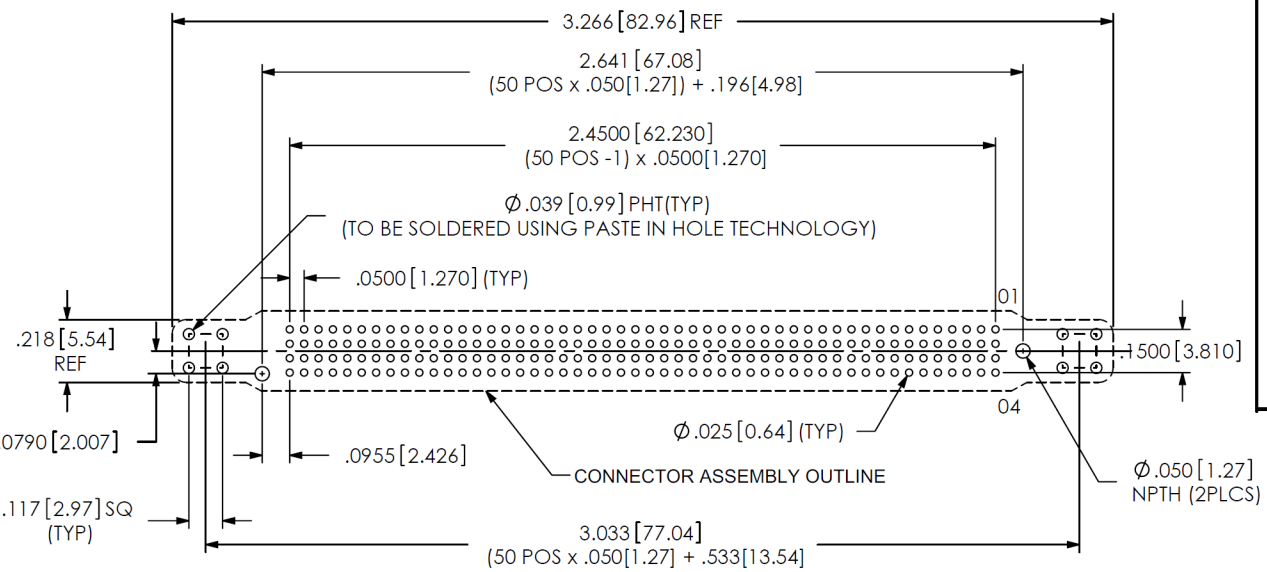
ITEM NO.	PART NUMBER	QUANTITY	MATERIAL
1	S-SEAM-50-2.0-L-04-2-A-GP-K	1.0000	INSULATOR: LCP, COLOR: BLACK TERMINAL: COPPER ALLOY/LEAD FREE SOLDER (B)
2	K-DOT-.138-.250-.005	1.0000	POLYIMIDE FILM
3	CT-SEAM082TP	.00571	CONDUCTIVE POLYMER
4	SEAX-0001	.01000	LABEL



SECTION "A"-"A"  
SCALE 4:1



PACKAGING VIEW



RECOMMENDED FOOTPRINT

**B** CRITICAL DIMENSION INSPECTION INSTRUCTION TABLE

ASSEMBLY OPERATION	IN-PROCESS INSPECTION
FILL NEW-SUB-T-1M36	C2, C3, C9, C11, C15, C16, C17, C19, C20, C22
ADD PAD	C5, C6, C21
ADD -GP OPTION	C7, C8, C12
FINISHED GOOD INSPECTION	C23

CPCs INTENTIONALLY DELETED: C1, C10, C13, C14

**PROPRIETARY NOTE**  
THIS DOCUMENT CONTAINS INFORMATION CONFIDENTIAL AND PROPRIETARY TO SAMTEC, INC. AND SHALL NOT BE REPRODUCED OR TRANSFERRED TO OTHER DOCUMENTS OR DISCLOSED TO OTHERS OR USED FOR ANY PURPOSE OTHER THAN THAT WHICH IT WAS OBTAINED WITHOUT THE EXPRESSED WRITTEN CONSENT OF SAMTEC, INC.

DO NOT SCALE DRAWING  
SHEET SCALE: 2:1



520 PARK EAST BLVD, NEW ALBANY, IN 47150  
PHONE: 812-944-6733 FAX: 812-948-5047  
e-Mail: info@SAMTEC.com code 55322

DESCRIPTION:  
.050 PITCH TERMINAL ARRAY ASSEMBLY  
DWG. NO.

ASP-161073-01