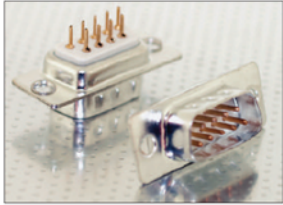
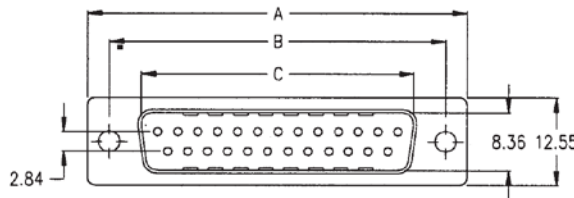


Straight PCB Mount D-Type Connectors

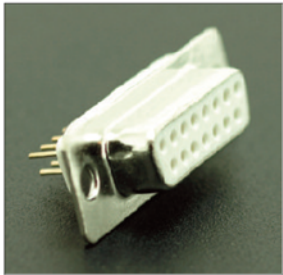
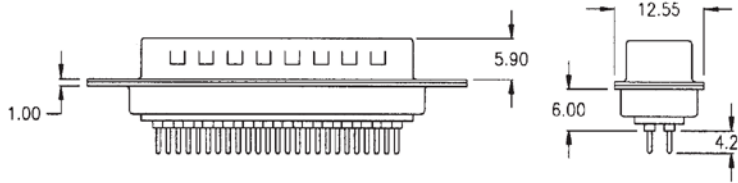
9,15,25,37 and 50 pin - RoHS Compliant
 White & Black plastic insulators available (Depending on type/size)
 Gold flash plating on mating contacts - Tin or gold flash plated solder tails



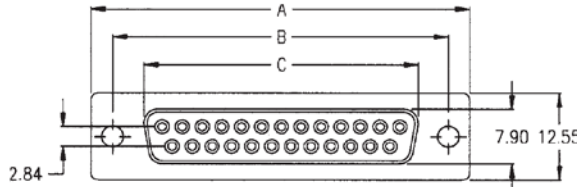
TSM-xx-P- Plug



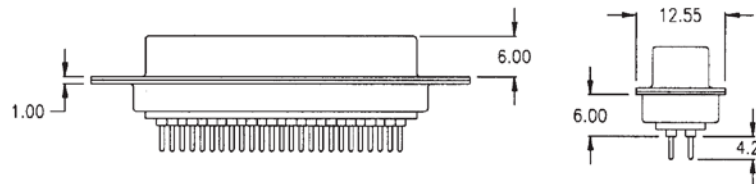
No. of contacts	Dimension		
	A	B	C
009	30.81 1.213	24.89 .984	18.92 .666
015	39.14 1.541	33.32 1.312	25.25 .994
025	53.04 2.088	47.04 1.852	38.86 1.534
037	69.32 2.729	63.50 2.500	55.42 2.182



TSM-xx-S Socket



No. of contacts	Dimension		
	A	B	C
009	30.81 1.213	24.89 .984	18.92 .643
015	39.14 1.541	33.32 1.312	24.66 .971
025	53.04 2.088	47.04 1.852	38.38 1.511
037	69.32 2.729	63.50 2.500	54.84 2.159

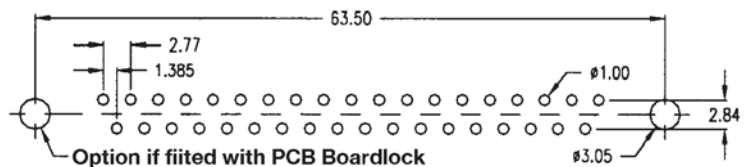


Ordering Information:

TSM-xx-y-zzz-dd

1 2 3 4

- Option 1 (XX) Number of Positions:
09, 15, 25, 37 & 50
Please note – MOQs may apply
- Option 2 (y) Mating Type:
P – Plug or S – Socket
- Option 3 (zzz) Mounting Option (Leave blank for none)
HB4 – 3.8mm Rear 440UNC Rivets
HB6 – 5.8mm Rear 440UNC Rivets
BL – 5.8mm Rear 440UNC Board Locks
- Option 4 (dd) Fitted Hex Nuts
HN – 6mm Standard Hex Nut



Specification for TSM-xx-y-zzz-dd

- Insulator Material: White or Black Thermoplastic UL94V-0
 Contact Material: Brass
 Current Rating: 2A Max.
 Contact Plating: Gold Flash over Ni underplate/Tin solder tails
 Shell Plating: (Steel) SPCC T:0.30mm
 DWV: 500V AC for 1 minute
 Insulation Resistance: 3000MΩ min. @ 500V DC
 Contact Resistance: 15mΩ Max.
 Operating Temp: -55°C to +105°C

For Black insulator specify "Black" at end of part code. Leave blank for standard White insulator.

All parts are subject to material availability and MOQ

