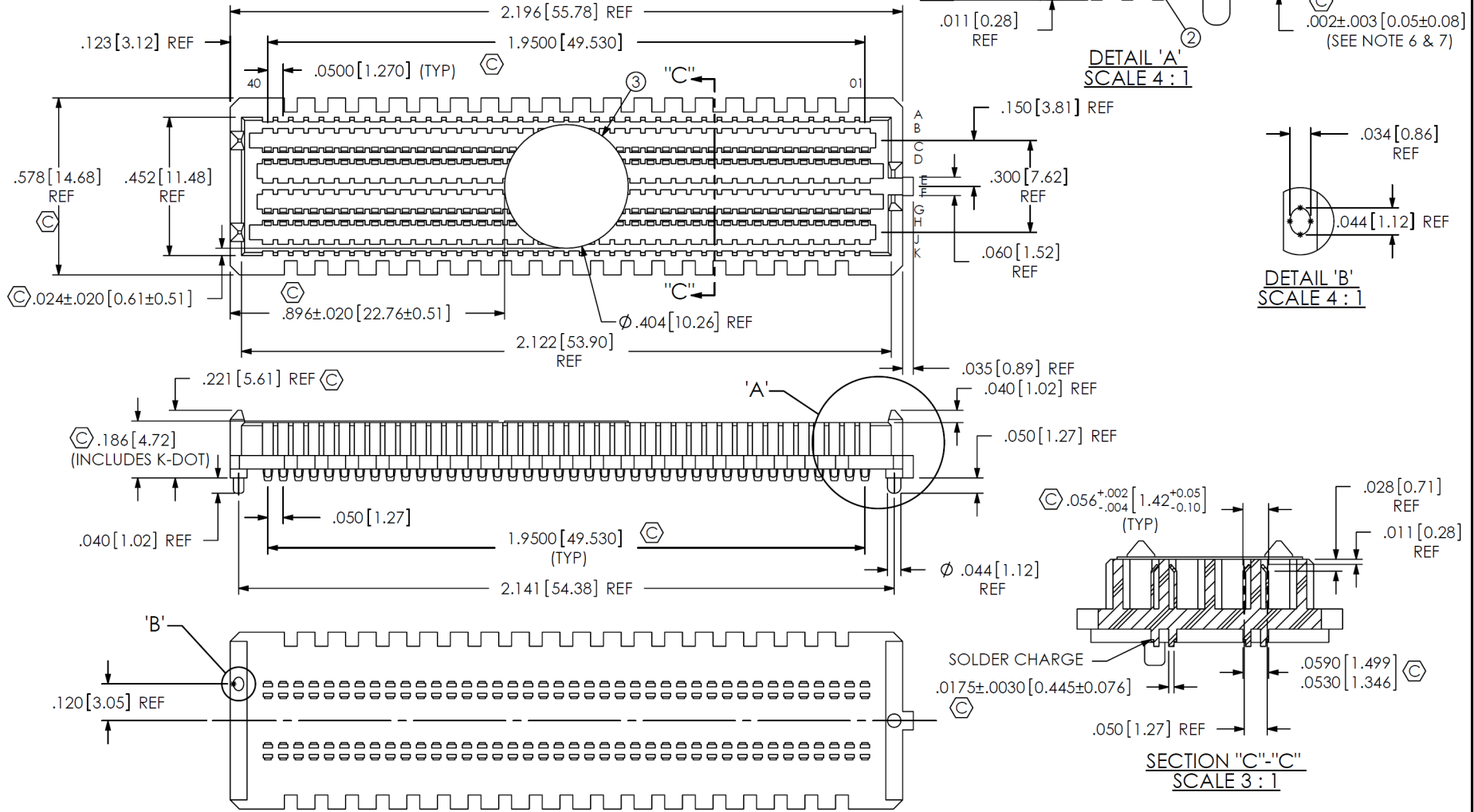




- NOTES:  
 1. FILL 3, 4, 7 & 8 ROWS ONLY NOT AVAILABLE AS STANDARD.  
 VITA 57 CONNECTOR.  
 2. NOTE DELETED.  
 3. Ⓢ REPRESENTS A CRITICAL DIMENSION.  
 4. MINIMUM PUSHOUT FORCE: 0.50 LB.  
 5. ATTACH LABEL "SEAX-0001" TO EACH TAPE & REEL PACKAGE.  
 6. MAXIMUM ROW TO ROW VARIATION .003[0.08], MEASURED FIRST & LAST POSITIONS ONLY, ALL ROWS.  
 7. DIMENSION C8 MUST BE MEASURED IN THE FOUR OUTSIDE CORNERS USING INSPECTION FIXTURE AT-1817-836-2, USE CO-AU-WI-2003-M FOR PROCESS.  
 8. PARTS TO BE PACKAGED IN TAPE & REEL.

ANY REV MADE TO THIS PRINT MUST HAVE AN UPDATED MKT PRINT



ITEM NO.	PART NUMBER	QUANTITY	MATERIAL
1	SEAM-40-02.0-10-A	1.0000	LCP, UL 94 V0, COLOR: BLACK
2	NEW-SUB-T-1M36-02.0-S-2	160.00	COPPER ALLOY / LEAD FREE SOLDER Ⓢ
3	K-DOT-.404-.500-.005	1.0000	POLYIMIDE FILM
4	CT-SEAM032MS	1.0000	CONDUCTIVE POLYMER

UNLESS OTHERWISE SPECIFIED, DIMENSIONS ARE IN INCHES.

TOLERANCES ARE:  
 DECIMALS                      ANGLES  
 .XX: ±.01[0.3]                      2°  
 .XXX: ±.005[0.13]  
 .XXXX: ±.0020[0.051]

PROPRIETARY NOTE  
 THIS DOCUMENT CONTAINS CONFIDENTIAL AND PROPRIETARY INFORMATION AND ALL DESIGN, MANUFACTURING, REPRODUCTION, USE, PATENT RIGHTS AND SALES RIGHTS ARE EXPRESSLY RESERVED BY SAMTEC, INC. THIS DOCUMENT SHALL NOT BE DISCLOSED, IN WHOLE OR PART, TO ANY UNAUTHORIZED PERSON OR ENTITY NOR REPRODUCED, TRANSFERRED OR INCORPORATED IN ANY OTHER PROJECT IN ANY MANNER WITHOUT THE EXPRESS WRITTEN CONSENT OF SAMTEC, INC.

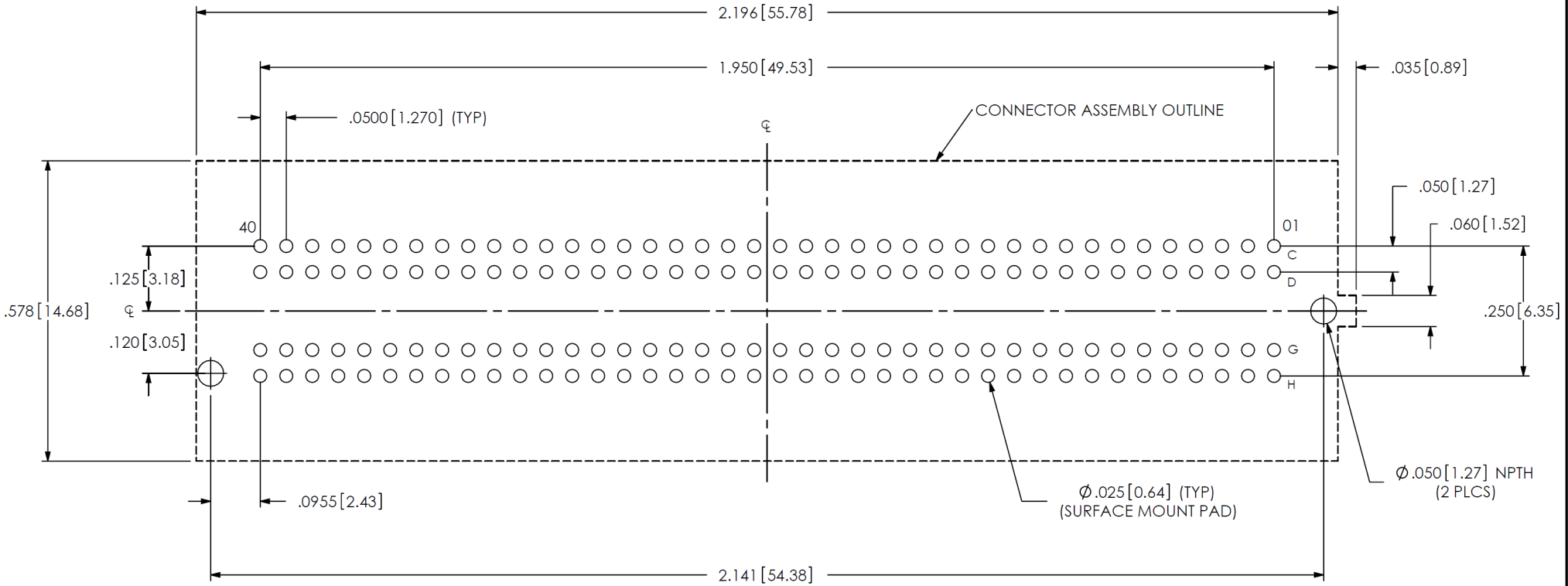
DO NOT SCALE DRAWING                      SHEET SCALE: 1.75:1

PLATING:  
 CONTACT AREA: .000030 GOLD OVER .000050 NICKEL  
 REMAINDER: .000200 REF TIN OVER .000050 NICKEL

**samtec**  
 520 PARK EAST BLVD, NEW ALBANY, IN 47150  
 PHONE: 812-944-6733    FAX: 812-948-5047  
 e-Mail: info@SAMTEC.com    code 55322

DESCRIPTION: .050 TERMINAL ARRAY ASSEMBLY  
 DWG. NO. ASP-134606-01  
 BY: G. PURVIS    11/02/2007    SHEET 1 OF 4

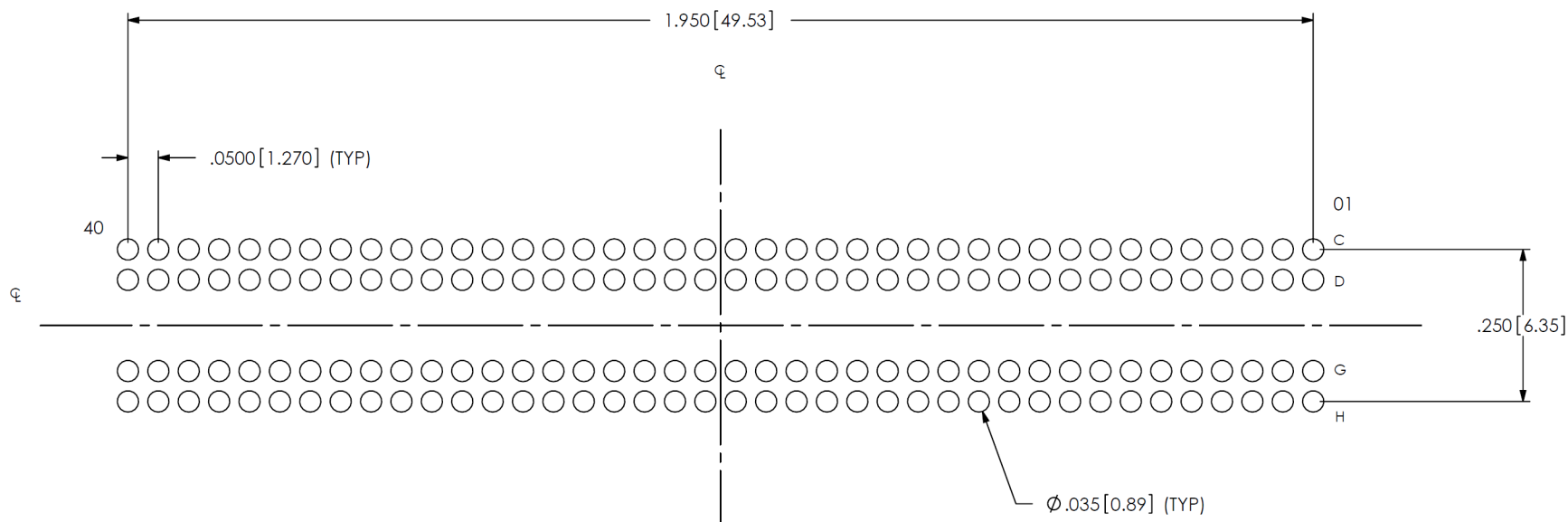
F:\DWG\MISC\MKTG\ASP-134606-01-MKT.SLDDRW




**RECOMMENDED PCB LAYOUT**  
 ALL DIMENSIONS ARE SYMMETRIC ABOUT CENTERLINE

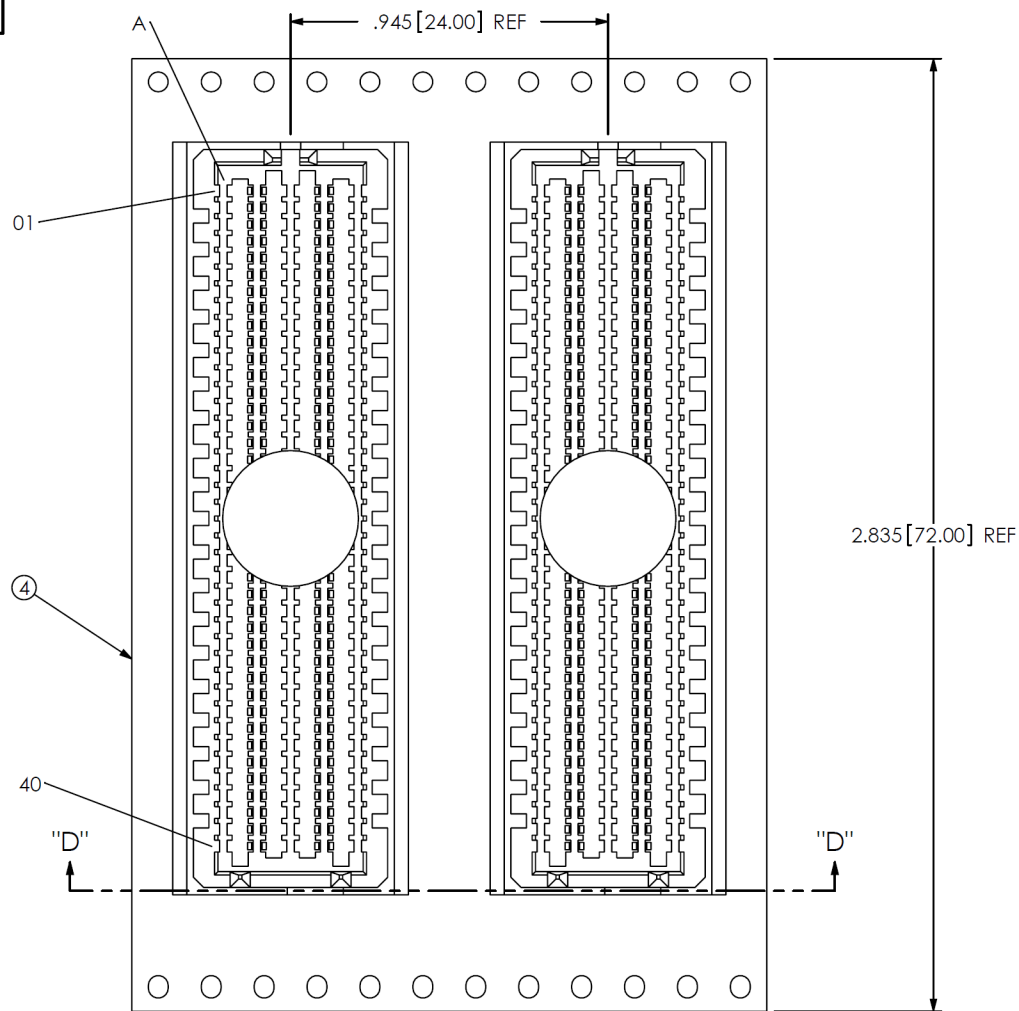
<p><b>PROPRIETARY NOTE</b>          * THIS DOCUMENT CONTAINS CONFIDENTIAL AND PROPRIETARY INFORMATION AND ALL DESIGN, MANUFACTURING, REPRODUCTION, USE, PATENT RIGHTS AND SALES RIGHTS ARE EXPRESSLY RESERVED BY SAMTEC, INC. THIS DOCUMENT SHALL NOT BE DISCLOSED, IN WHOLE OR PART, TO ANY UNAUTHORIZED PERSON OR ENTITY NOR REPRODUCED, TRANSFERRED OR INCORPORATED IN ANY OTHER PROJECT IN ANY MANNER WITHOUT THE EXPRESS WRITTEN CONSENT OF SAMTEC, INC.</p>	<p><b>samtec</b>          520 PARK EAST BLVD, NEW ALBANY, IN 47150          PHONE: 812-944-6733 FAX: 812-948-5047          e-Mail: info@SAMTEC.com code 55322</p>
<p>SHEET SCALE: 3.5:1</p>	<p>DESCRIPTION:          .050 TERMINAL ARRAY ASSEMBLY</p>
<p>F:\DWG\MISC\MKTG\ASP-134606-01-MKT.SLDDRW</p>	<p>DWG. NO.  <b>ASP-134606-01</b>          BY: G. PURVIS 11/02/2007 SHEET 2 OF 4</p>

NOTES:  
STENCIL THICKNESS TO BE .0060[0.152].

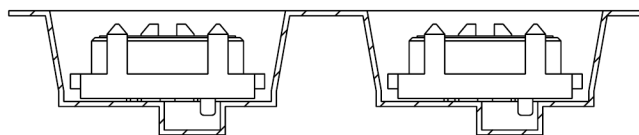


RECOMMENDED STENCIL LAYOUT  
ALL DIMENSIONS ARE SYMMETRIC ABOUT CENTERLINE

<p><b>PROPRIETARY NOTE</b></p> <p>THIS DOCUMENT CONTAINS CONFIDENTIAL AND PROPRIETARY INFORMATION AND ALL DESIGN, MANUFACTURING, REPRODUCTION, USE, PATENT RIGHTS AND SALES RIGHTS ARE EXPRESSLY RESERVED BY SAMTEC, INC. THIS DOCUMENT SHALL NOT BE DISCLOSED, IN WHOLE OR PART, TO ANY UNAUTHORIZED PERSON OR ENTITY NOR REPRODUCED, TRANSFERRED OR INCORPORATED IN ANY OTHER PROJECT IN ANY MANNER WITHOUT THE EXPRESS WRITTEN CONSENT OF SAMTEC, INC.</p>	 <p>520 PARK EAST BLVD, NEW ALBANY, IN 47150 PHONE: 812-944-6733 FAX: 812-948-5047 e-Mail: info@SAMTEC.com code 55322</p>
<p>SHEET SCALE: 3.5:1</p>	<p>DESCRIPTION: .050 TERMINAL ARRAY ASSEMBLY</p>
<p>F:\DWG\MISC\MKTG\ASP-134606-01-MKT.SLDDRW</p>	<p>DWG. NO. <b>ASP-134606-01</b></p> <p>BY: G. PURVIS 11/02/2007 SHEET 3 OF 4</p>



USER DIRECTION OF UN-REELING  
POCKET NOT DETAILED →



SECTION "D"-"D"  
PACKAGING VIEW

**PROPRIETARY NOTE**

THIS DOCUMENT CONTAINS CONFIDENTIAL AND PROPRIETARY INFORMATION AND ALL DESIGN, MANUFACTURING, REPRODUCTION, USE, PATENT RIGHTS AND SALES RIGHTS ARE EXPRESSLY RESERVED BY SAMTEC, INC. THIS DOCUMENT SHALL NOT BE DISCLOSED, IN WHOLE OR PART, TO ANY UNAUTHORIZED PERSON OR ENTITY NOR REPRODUCED, TRANSFERRED OR INCORPORATED IN ANY OTHER PROJECT IN ANY MANNER WITHOUT THE EXPRESS WRITTEN CONSENT OF SAMTEC, INC.



520 PARK EAST BLVD, NEW ALBANY, IN 47150  
PHONE: 812-944-6733 FAX: 812-948-5047  
e-Mail: info@SAMTEC.com code 55322

SHEET SCALE: 1.75:1

DESCRIPTION:  
.050 TERMINAL ARRAY ASSEMBLY

DWG. NO.  
ASP-134606-01

BY: G. PURVIS 11/02/2007 SHEET 4 OF 4