

(2.54 mm) .100"

TS, TD, HTS SERIES

PRECISION MACHINED TERMINAL STRIPS

SPECIFICATIONS

Insulator Material:

Black G.F. Polyester (TS, TD)
Black Liquid Crystal Polymer (HTS)

Terminal Material:

Brass, except Style G is
Phosphor Bronze

Plating:

Au over 50 μ " (1.27 μ m) Ni or
Sn over 100 μ " (2.54 μ m) Cu
or 50 μ " (1.27 μ m) Ni

Operating Temp Range:

-55 °C to +125 °C with Gold

-55 °C to +105 °C with Tin

RoHS Compliant:

Yes

Lead-Free Solderable:

Wave only

RECOGNITIONS



Note:
Some lengths, styles and options are non-standard, non-returnable.

Mates with:
SS, SD, HSS, SL,
SDL, ESS, ESD

TYPE STRIP

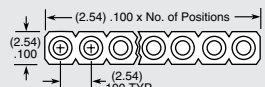
1

NO. PINS PER ROW

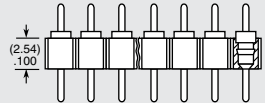
PLATING OPTION

LEAD STYLE

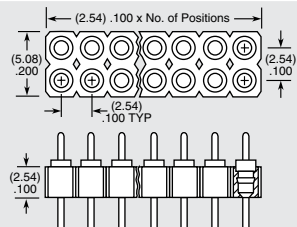
TS
= Single
Row Terminal
Strip



HTS
= Single Row
High Temp
Terminal Strip



TD
= Double Row
Terminal Strip



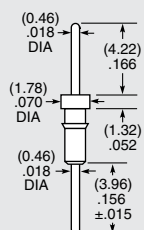
-G
= 20 μ " (0.51 μ m) Gold
Except -J & -L are
10 μ " (0.25 μ m) Gold

-T
= Tin

01 thru 32
=TS Series

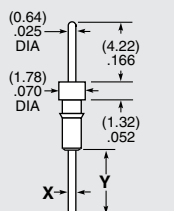
01 thru 36
= HTS & TD Series

-AA



Component No. = T-1R5-

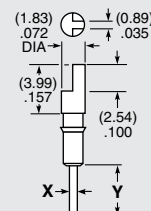
-A, -A-1, -A-2



-A Component No. = T-1R0-
-A-X Component No. = T-1R7

| LEAD STYLE | X (DIA) | Y (±.015) |
|------------|-------------|-------------|
| -A | (0.46) .018 | (3.96) .156 |
| -A-1 | (0.64) .025 | (5.33) .210 |
| -A-2 | (0.89) .035 | |

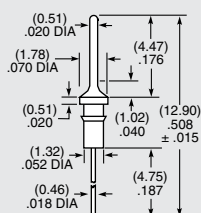
-C, -C-1, -C-2



-C Component No. = T-1R2-
-C-X Component No. = T-1R9-

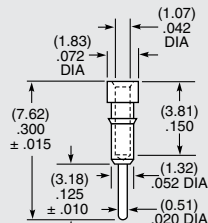
| LEAD STYLE | X (DIA) | Y (±.015) |
|------------|-------------|-------------|
| -C | (0.46) .018 | (3.96) .156 |
| -C-1 | (0.64) .025 | (5.33) .210 |
| -C-2 | (0.89) .035 | |

-G-1



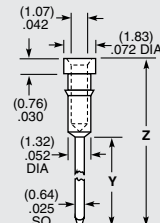
Component No. = T-1R5-

-J



Component No. = S-1P1-

-L-1, -L-2, -L-3



Component No. = S-1W1

| LEAD STYLE | Y (DIA) | Y (±.015) |
|------------|--------------|--------------|
| -L-1 | (12.95) .510 | (17.86) .703 |
| -L-2 | (9.14) .360 | (14.05) .553 |
| -L-3 | (6.60) .260 | (11.51) .453 |

Due to technical progress, all designs, specifications and components are subject to change without notice.

WWW.TOBY.CO.UK

All parts within this catalog are built to Samtec's specifications.

Customer specific requirements must be approved by Samtec and identified in a Samtec customer-specific drawing to apply.