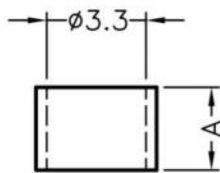
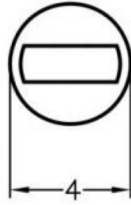


⚠ This dwg is for reference only, Actual dwg should be based on formal engineering dwg.



FOR:LEDS-0.8~LEDS-3.5

A	L	P
0.8	3.0	1

L	Recommend Assembling LED Size
P	Number of Assembling LED

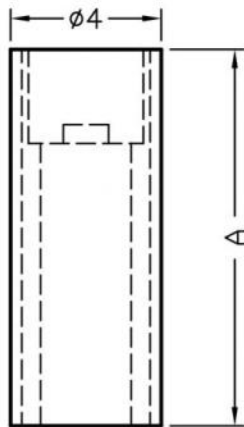
Ordering information:

<i>Measurements in mm</i>			
PART NO	A	L	P
LEDS-0.8	0.8	3	1
LEDS-1	1	3	1
LEDS-1.5	1.5	3	1
LEDS-2	2	3	1
LEDS-2.5	2.5	3	1
LEDS-3	3	3	1
LEDS-3.5	3.5	3	1



the **vital**
component

PART NUMBER		LEDS-0.8		SPEC. DWG.	
TITLE					
LED SPACER SUPPORT					
MATERIAL			COLOR		
NYLON 66(UL) 94V-0			NATURAL		
SIZE	SCALE	UNIT	CHECK		
A4	2:1	mm	Z.C		



FOR:LEDS-XX

A	L	P
4.0	3.0	1

L	Recommend Assembling LED Size
P	Number of Assembling LED

PART NUMBER		LEDS-4	SPEC. DWG.	
TITLE				
LED SPACER SUPPORT				
MATERIAL			COLOR	
NYLON 66(UL) 94V-0			NATURAL	
SIZE	SCALE	UNIT	CHECK	
A4	2:1	mm	Z.C	

PART NO	A	L	P	
LEDS-4.5	4.5	3.0	1	
	[1] NYLON 66(UL), Flame class: 94V-0/94V-2, Color: NATURAL.			
LEDS-5	5.0	3.0	1	
	[1] NYLON 66(UL), Flame class: 94V-0/94V-2, Color: NATURAL.			
LEDS-5.5	5.5	3.0	1	
	[1] NYLON 66(UL), Flame class: 94V-0/94V-2, Color: NATURAL.			
LEDS-6	6.0	3.0	1	
	[1] NYLON 66(UL), Flame class: 94V-0/94V-2, Color: NATURAL.			
LEDS-6.5	6.5	3.0	1	
	[1] NYLON 66(UL), Flame class: 94V-0/94V-2, Color: NATURAL.			
LEDS-7	7.0	3.0	1	
	[1] NYLON 66(UL), Flame class: 94V-0/94V-2, Color: NATURAL.			
LEDS-7.5	7.5	3.0	1	
	[1] NYLON 66(UL), Flame class: 94V-0/94V-2, Color: NATURAL.			
LEDS-8	8.0	3.0	1	
	[1] NYLON 66(UL), Flame class: 94V-0/94V-2, Color: NATURAL.			
LEDS-8.5	8.5	3.0	1	
	[1] NYLON 66(UL), Flame class: 94V-0/94V-2, Color: NATURAL.			
LEDS-9	9.0	3.0	1	
	[1] NYLON 66(UL), Flame class: 94V-0/94V-2, Color: NATURAL.			
LEDS-9.5	9.5	3.0	1	
	[1] NYLON 66(UL), Flame class: 94V-0/94V-2, Color: NATURAL.			
LEDS-9.8	9.8	3.0	1	
	[1] NYLON 66(UL), Flame class: 94V-0/94V-2, Color: NATURAL.			
LEDS-10	10.0	3.0	1	
	[1] NYLON 66(UL), Flame class: 94V-0/94V-2, Color: NATURAL.			
LEDS-10.5	10.5	3.0	1	
	[1] NYLON 66(UL), Flame class: 94V-0/94V-2, Color: NATURAL.			

PART NO	A	L	P	
LEDS-11	11.0	3.0	1	[1] NYLON 66(UL), Flame class: 94V-0/94V-2, Color: NATURAL.
LEDS-11.5	11.5	3.0	1	[1] NYLON 66(UL), Flame class: 94V-0/94V-2, Color:NATURAL.
LEDS-12	12.0	3.0	1	[1] NYLON 66(UL), Flame class: 94V-0/94V-2, Color:NATURAL.
LEDS-12.5	12.5	3.0	1	[1] NYLON 66(UL), Flame class: 94V-0/94V-2, Color: NATURAL.
LEDS-13	13.0	3.0	1	[1] NYLON 66(UL), Flame class: 94V-0/94V-2, Color: NATURAL.
LEDS-13.5	13.5	3.0	1	[1] NYLON 66(UL), Flame class: 94V-0/94V-2, Color: NATURAL.
LEDS-14	14.0	3.0	1	[1] NYLON 66(UL), Flame class: 94V-0/94V-2, Color: NATURAL.
LEDS-14.5	14.5	3.0	1	[1] NYLON 66(UL), Flame class: 94V-0/94V-2, Color: NATURAL.
LEDS-15	15.0	3.0	1	[1] NYLON 66(UL), Flame class: 94V-0/94V-2, Color: NATURAL.
LEDS-15.5	15.5	3.0	1	[1] NYLON 66(UL), Flame class: 94V-0/94V-2, Color: NATURAL.
LEDS-16	16.0	3.0	1	[1] NYLON 66(UL), Flame class: 94V-0/94V-2, Color: NATURAL.
LEDS-16.5	16.5	3.0	1	[1] NYLON 66(UL), Flame class: 94V-0/94V-2, Color:NATURAL.
LEDS-17	17.0	3.0	1	[1] NYLON 66(UL), Flame class: 94V-0/94V-2, Color: NATURAL.
LEDS-17.5	17.5	3.0	1	[1] NYLON 66(UL), Flame class: 94V-0/94V-2, Color: NATURAL.

PART NO	A	L	P	
LEDS-18	18.0	3.0	1	[1] NYLON 66(UL), Flame class: 94V-0/94V-2, Color: NATURAL.
LEDS-18.5	18.5	3.0	1	[1] NYLON 66(UL), Flame class: 94V-0/94V-2, Color: NATURAL.
LEDS-19	19.0	3.0	1	[1] NYLON 66(UL), Flame class: 94V-0/94V-2, Color: NATURAL.
LEDS-19.5	19.5	3.0	1	[1] NYLON 66(UL), Flame class: 94V-0/94V-2, Color: NATURAL.
LEDS-20	20.0	3.0	1	[1] NYLON 66(UL), Flame class: 94V-0/94V-2, Color: NATURAL.
LEDS-20.5	20.5	3.0	1	[1] NYLON 66(UL), Flame class: 94V-0/94V-2, Color: NATURAL.
LEDS-21	21.0	3.0	1	[1] NYLON 66(UL), Flame class: 94V-0/94V-2, Color: NATURAL.
LEDS-21.5	21.5	3.0	1	[1] NYLON 66(UL), Flame class: 94V-0/94V-2, Color: NATURAL.
LEDS-22	22.0	3.0	1	[1] NYLON 66(UL), Flame class: 94V-0/94V-2, Color: NATURAL.
LEDS-22.5	22.5	3.0	1	[1] NYLON 66(UL), Flame class: 94V-0/94V-2, Color: NATURAL.
LEDS-23	23.0	3.0	1	[1] NYLON 66(UL), Flame class: 94V-0/94V-2, Color: NATURAL.
LEDS-23.5	23.5	3.0	1	[1] NYLON 66(UL), Flame class: 94V-0/94V-2, Color: NATURAL.
LEDS-24	24.0	3.0	1	[1] NYLON 66(UL), Flame class: 94V-0/94V-2, Color: NATURAL.