

**SPECIFICATION**

**MATERIAL**

Insulator: Thermal Plastic UL94V-0  
 Contacts: Copper Alloy  
 Rivet,Boardlock: Copper Alloy

**CONTACT PLATING**

Underplate: 50u"~150u" Nickel  
 Contact Area: 1u"~30u" Gold  
 Solder Tails Area: 100u" Tin Min.

**ELECTRICAL**

Operation Voltage: 250V AC Max.

Current Rating:

TEMP(°C)	20	70	100
CURRENT	2.0A	1.6A	1.0A

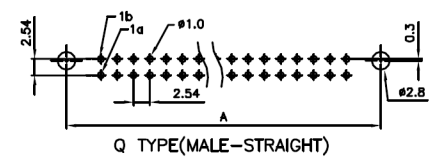
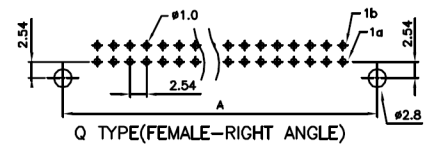
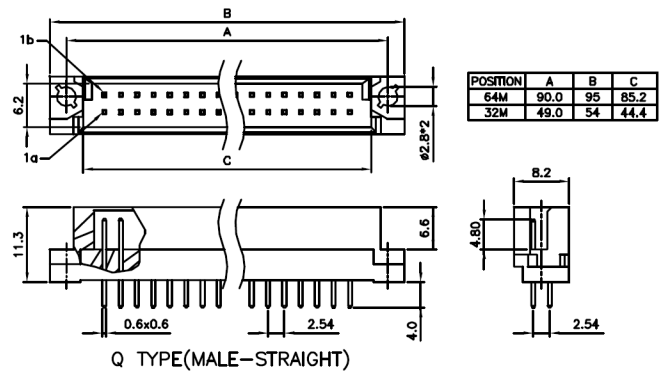
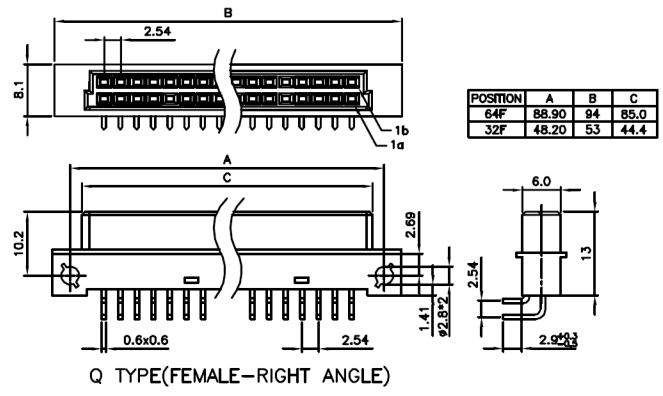
Contact Resistance: 20 mΩ Max.  
 Insulation Resistance: 1000 MΩ Min. @500V DC  
 Dielectric Withstanding Voltage: 500V AC/minute  
 Temperature Range: -55°C to +105°C

PART NO.

405 A E 64 M S S C A B 4  
 1 2 3 4 5 6 7 8 9 10 11

- 1.SERIES NO.
- 2.TYPE: A=Standard
- 3.GREEN OPTION:  
F=RoHS
- 4.CONTACT NUMBER  
08 16 32 64
- 5.CONTACT TYPE:  
M=Male(DIP)  
F=Female(DIP)  
A=Male(Boardlock)  
B=Female(Boardlock)
- 6.CONTACT AREA PLATING:  
S=Selective Gold 1u"  
C=Selective Gold 15u"  
D=Selective Gold 30u"
- 7.CONTACT OPTION:  
S=Straight  
R=Right Angle

- 8.TYPE OPTION:  
A=Long Insulator Q Type(64 Pin)  
B=Short Insulator Q Type(32 Pin)
- 9.CONTACT INSERTING OPTION:  
A=Dual Row(a+b)  
10.CONTACT LENGTH:  
B=4.0mm(Straight)  
E=2.9mm(Right Angle)
- 11.INSULATOR COLOR:  
4=Gray



UNLESS OTHERWISE SPECIFIED TOLERANCE	
ANG.	±5°
0.	±0.5
.0	±0.3
.00	±0.2
SCALE: AS SHOWN	UNIT: mm
DRAWN	12/17/13
CHECKED	/ /
APPROVED	/ /
SIZE	A4
REV.	X1

the **vital**  
component

DRAWN NAME:  
DIN 41612 TWO ROW Q TYPE

PRODUCT NO. 405AF64MSSCAB4

FILE NAME: 405AF64MSSCAB4

REV.	DESCRIPTION	DATE