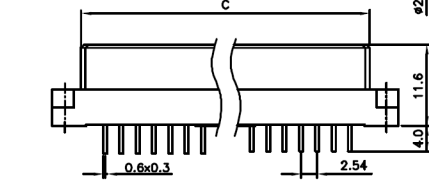
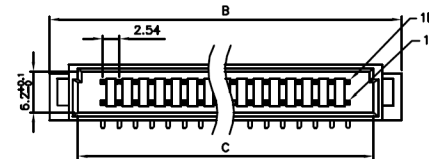


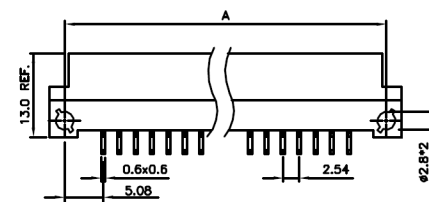
POSITION	A	B	C
64F	90.00	95	85
32F	50.00	54	44



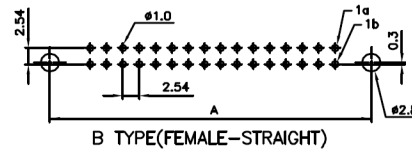
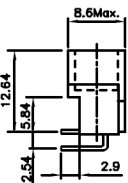
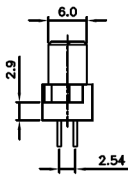
B TYPE(FEMALE-STRAIGHT)



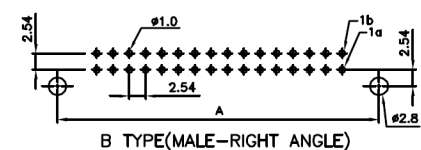
POSITION	A	B	C
64M	88.90	94	85.2
32M	48.26	53	44.6



B TYPE(MALE-RIGHT ANGLE)



B TYPE(FEMALE-STRAIGHT)



B TYPE(MALE-RIGHT ANGLE)

SPECIFICATION

MATERIAL

Insulator: Thermal Plastic UL94V-0

Contacts: Copper Alloy

Rivet,Boardlock: Copper Alloy

CONTACT PLATING

Underplate: 50u"~150u" Nickel

Contact Area: 1u"~30u" Gold

Solder Tails Area: 100u" Tin Min.

ELECTRICAL

Operation Voltage: 250V AC Max.

Current Rating:

TEMP(°C)	20	70	100
CURRENT	2.0A	1.6A	1.0A

Contact Resistance: 20 mΩ Max.

Insulation Resistance: 1000 MΩ Min. @500V DC

Dielectric Withstanding Voltage: 500V AC/minute

Temperature Range: -55°C to +105°C

PART NO.

405 A E 64 M S R A A E 4  
1 2 3 4 5 6 7 8 9 10 11

1.SERIES NO.

2.TYPE: A=Standard

3.GREEN OPTION:  
F=RoHS

4.CONTACT NUMBER  
32 64

5.CONTACT TYPE:  
M=Male(DIP)  
F=Female(DIP)  
A=Male(Boardlock)  
B=Female(Boardlock)

6.CONTACT AREA PLATING:  
S=Selective Gold 1u"  
C=Selective Gold 15u"  
D=Selective Gold 30u"

7.CONTACT OPTION:  
S=Straight  
R=Right Angle

8.TYPE OPTION:  
A=Long Insulator B Type(64 Pin)  
B=Short Insulator B Type(32 Pin)

9.CONTACT INSERTING OPTION:  
A=Dual Row(a+b)  
10.CONTACT LENGTH:  
B=4.0mm(Straight)  
E=2.9mm(Right Angle)

11.INSULATOR COLOR:  
4=Gray

UNLESS OTHERWISE SPECIFIED TOLERANCE	
ANG.	±5°
0.	±0.5
.0	±0.3
.00	±0.2

SCALE: AS SHOWN UNIT: mm

DRAWN 12/17/13

CHECKED / /

APPROVED / /

SIZE A4 REV. X1

the vital component

DRAWN NAME:

DIN 41612 TWO ROW B TYPE

PRODUCT NO. 405AF64MSRAAE4

FILE NAME: 405AF64MSRAAE4

REV.	DESCRIPTION	DATE