

C01h SHRUNK SHROUDED HEADER SMT

PITCH: 2.54mm * 2.54mm

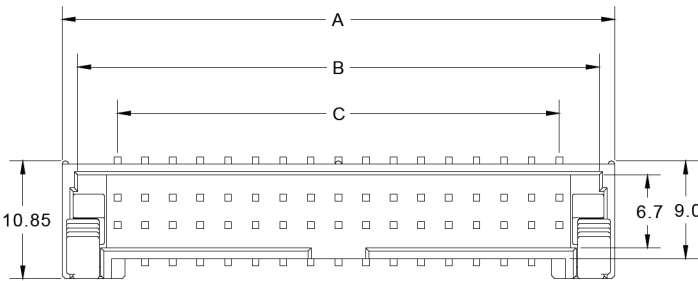
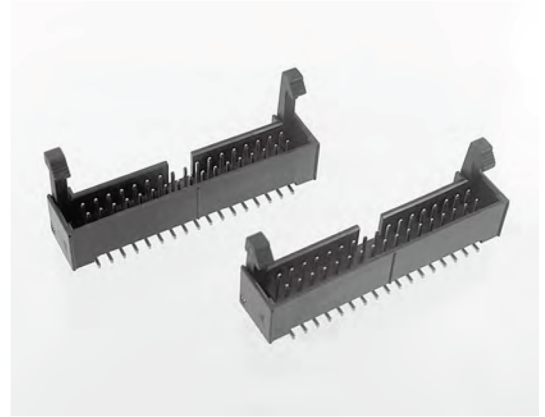
SPECIFICATIONS

Material

Insulator : LCP, glass reinforced, rated UL 94V-0
 Contact : Brass

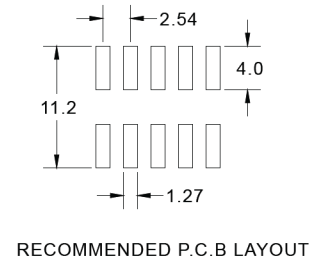
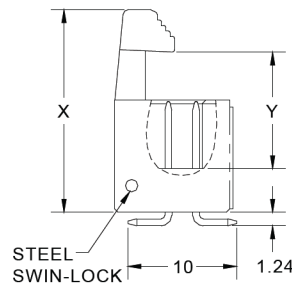
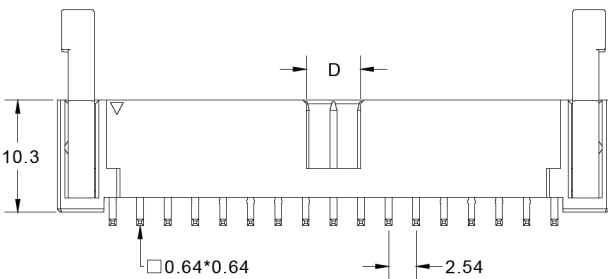
Electrical

Current Rating : 2 Amp
 Contact Resistance : 30 mΩ max.
 Insulation Resistance : 3000 MΩ min.
 Dielectric Withstanding Voltage : 500V AC for 1minute
 Operating Temperature : -40°C to +105°C
 ► Mating Suggestion : A01, A03a & A35 series.



| POSITION | A | B | C | D |
|----------|-------|-------|-------|------|
| 6 | 15.28 | 12.42 | 5.08 | 2.30 |
| 8 | 17.82 | 14.96 | 7.62 | 2.30 |
| 10 | 20.36 | 17.50 | 10.16 | 5.00 |
| 12 | 22.90 | 20.04 | 12.70 | 5.00 |
| 14 | 25.44 | 22.58 | 15.24 | 5.00 |
| 16 | 27.98 | 25.12 | 17.78 | 5.00 |
| 20 | 33.06 | 30.20 | 22.86 | 5.00 |
| 24 | 38.14 | 35.28 | 27.94 | 5.00 |
| 26 | 40.68 | 37.82 | 30.48 | 5.00 |
| 30 | 45.76 | 42.90 | 35.56 | 5.00 |
| 34 | 50.84 | 47.98 | 40.64 | 5.00 |
| 40 | 58.46 | 55.60 | 48.26 | 5.00 |
| 50 | 71.16 | 68.30 | 60.96 | 5.00 |
| 60 | 83.86 | 81.00 | 73.66 | 5.00 |
| 64 | 88.94 | 86.08 | 78.74 | 5.00 |

| ACCESSORIES | X | Y |
|-------------|------|------|
| LONG LATCH | 22.1 | 14.6 |
| SHORT LATCH | 18.7 | 10.6 |



How to order: C01h - 1 - 2 - 3 - 4 - 5 - 6 - G(RoHS)

| 1.NO. OF CONTACT | 2.CONTACT MATERIAL | 3.CONTACT PLATING | 4.ACCESSORIES | 5.PACKAGING | 6.INSULATOR COLOR |
|--|--------------------|---|---------------------------------|---|-------------------|
| 06 08 10 12 14 16 20 24 26 30 34 40 50 60 64 | A: BRASS | T: TIN PLATED S: SELECTIVE G: GOLD FLASH A: 5u" INCH GOLD B: 10u" INCH GOLD C: 15u" INCH GOLD D: 30u" INCH GOLD | A: LONG LATCH B: SHORT LATCH | A:TUBE WITH PAD B: TUBE W/O PAD C: TAPE & REEL WITH PAD | 1. BLACK |

the **vital** component