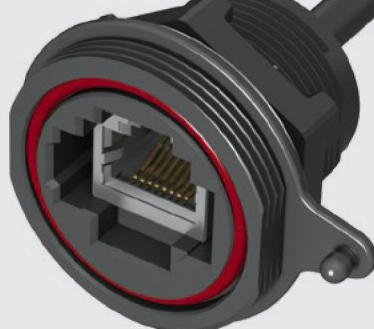
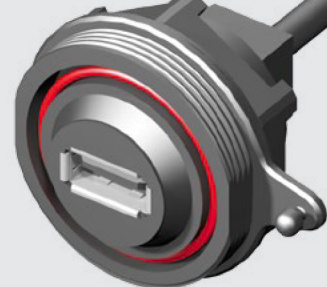




ACCLIMATE™



SCRUS-G-00.25-D-C5E



SCRUS-17-G-00.25-AMS-BC

SCRUS, SCRES SERIES

IP68 SEALED USB & ETHERNET

Mates with:
SCPU

SPECIFICATIONS

For complete specifications and recommended panel hole layout see www.samtec.com?SCRUS

Insulator Material:
PBT

Contact Material:
Phosphor Bronze

Wire:
20 AWG (Power)
25 AWG (Signal)
28 AWG (Drain)

O-Ring:
Silicone

Operating Temp Range:
-20 °C to +75 °C

RoHS Compliant:
Yes

RECOGNITIONS

For complete scope of recognitions see www.samtec.com/quality

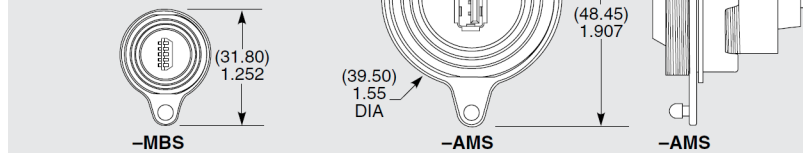


Note:
Some lengths, styles and options are non-standard, non-returnable.

TYPE	SHELL SIZE	PLATING	WIRE LENGTH	END 1 OPTION	END 2 OPTION
SCRUS = Sealed Circular USB Receptacle Cable Assembly	-17 (Standard USB only) -10 (Mini USB only)	-G = 30 μ" (0.76 μm) Gold on Contact, Nickel on Shell	-00.25 = (0.25 m) 9.84" Cable -00.50 = (0.50 m) 19.68" Cable Standard lengths (Assembled Length = Wire Length + (37.9 mm) 1.50")	-AMS = USB A Type, Sealed -BMS = USB B Type, Sealed -MBS = Mini USB B Type, Sealed	-AM = USB A Type, Not Sealed -BM = USB B Type, Not Sealed -MB = Mini USB B Type, Not Sealed -BC = Blunt Cut

DUST CAP
USB Flash Drive Cover: DCA-17-03

Device dimensions: 80.00 mm x 13.30 mm x 20.25 mm max.



OTHER SOLUTIONS

- Termination for standard USB cable from panel-to-board See SCRUS Series.

Mates with:
SCPE

SPECIFICATIONS

For complete specifications and recommended panel hole layout see www.samtec.com?SCRES

Insulator Material:
PBT

Contact Material:
Phosphor Bronze

Shield Material:
Phosphor Bronze

Wire:
24 AWG

O-Ring:
Silicone

Overmold:
PA66

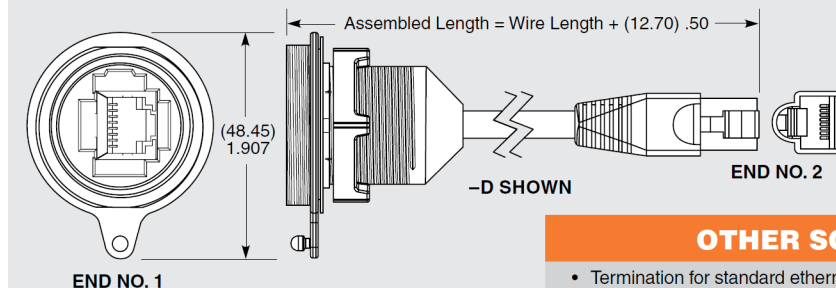
Current Rating:
3.8 A per pin (1 pin powered)

Operating Temp Range:
-40 °C to +70 °C

RoHS Compliant:
Yes

Note:
Some lengths, styles and options are non-standard, non-returnable.

TYPE	PLATING	WIRE LENGTH	END OPTION	C5E
SCRES = Sealed Circular Ethernet Receptacle Cable Assembly	-G = 50 μ" (1.27 μm) Gold on Contact, Nickel on Shell	-00.25 = (0.25 m) 9.84" Cable -00.50 = (0.50 m) 19.68" Cable Standard lengths	-D = Double Ended -BC = Blunt Cut	-C5E = Cat 5e rating



DUST CAP & PANEL PLUG

- Dust Cap: DCA-17-01
- Panel Plug: SCPPA-17-01 Contact Samtec.

OTHER SOLUTIONS

- Termination for standard ethernet cable from panel to board Contact Samtec.

Due to technical progress, all designs, specifications and components are subject to change without notice.

WWW.TOBY.CO.UK

All parts within this catalog are built to Samtec's specifications. Customer specific requirements must be approved by Samtec and identified in a Samtec customer-specific drawing to apply.