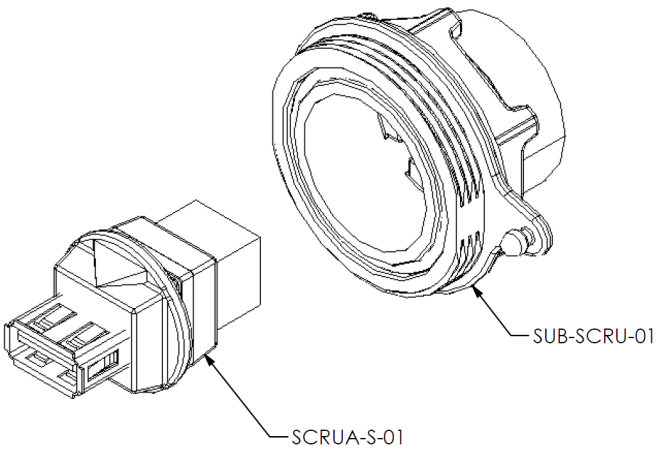
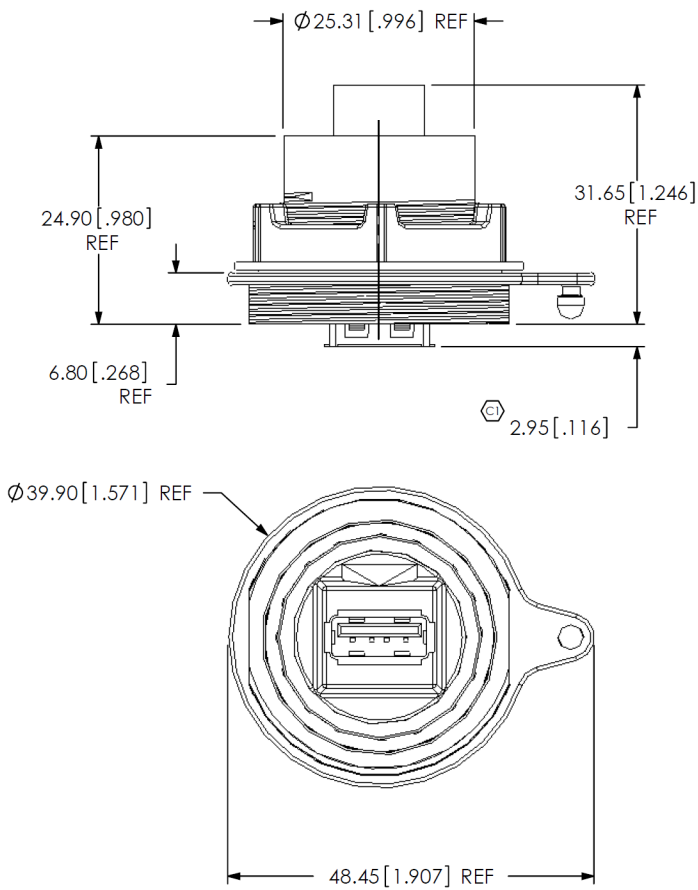


DO NOT  
SCALE FROM  
THIS PRINT

STYLE  
-01: USE SCRUA-S-01  
(SEE FIG. 1, SHT 1)  
-02: USE SCRUA-S-02  
(SEE FIG. 2, SHT 2)



RECOMMENDED PANEL HOLE FOR -01 & -02 STYLES  
(SEE NOTE 3)

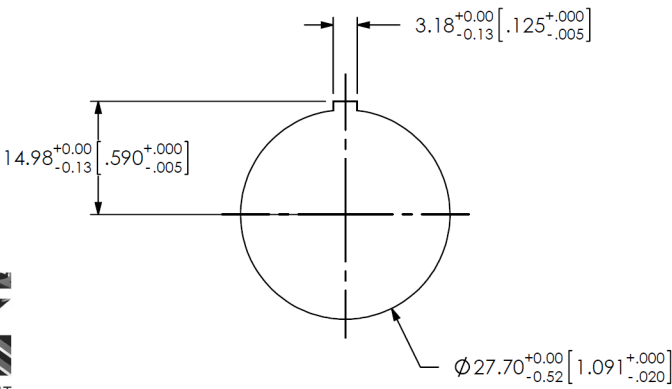
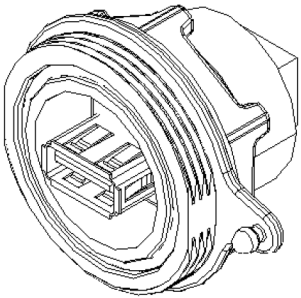


FIG. 1  
(SCRU-01 SHOWN)



- NOTES:
1. Ⓢ REPRESENTS A CRITICAL DIMENSION.
  2. ASSEMBLY TO MEET UL 94V-0.
  3. PANEL THICKNESS: 0.8[.03] - 5.2[.205].
  4. PARTS TO BE PACKAGED IN TRAYS.

B

F:\DWG\MISC\MKTG\SCRU-XX-MKT.SLDDRW

UNLESS OTHERWISE SPECIFIED, DIMENSIONS ARE IN MILLIMETERS. TOLERANCES ARE: DECIMALS ANGLES .X: ±0.3 [.01] 2° .XX: ±0.13 [.005] .XXX: ±0.051 [.0020]		PROPRIETARY NOTE THIS DOCUMENT CONTAINS INFORMATION CONFIDENTIAL AND PROPRIETARY TO SAMTEC, INC. AND SHALL NOT BE REPRODUCED OR TRANSFERRED TO OTHER DOCUMENTS OR DISCLOSED TO OTHERS OR USED FOR ANY PURPOSE OTHER THAN THAT WHICH IT WAS OBTAINED WITHOUT THE EXPRESSED WRITTEN CONSENT OF SAMTEC, INC.	 520 PARK EAST BLVD, NEW ALBANY, IN 47150 PHONE: 812-944-6733 FAX: 812-948-5047 e-Mail: info@SAMTEC.com code 55322
MATERIAL: DO NOT SCALE DRAWING SHEET SCALE: 1:1 OR-17-01: SILICONE PMB-17-01: PA66 SPG-17-01: SILICONE SPN-17-01: PA66 SCRUA-XX INSULATOR: PBT SCRUA-XX CONTACTS: PHOS BRONZE SCRUA-XX SHIELDS: PHOS BRONZE SCRUA-XX OVERMOLD: PBT		DESCRIPTION: USB PANEL MOUNT ASSEMBLY DWG. NO. SCRU-XX	
		BY: CHAD F 12/13/2004	

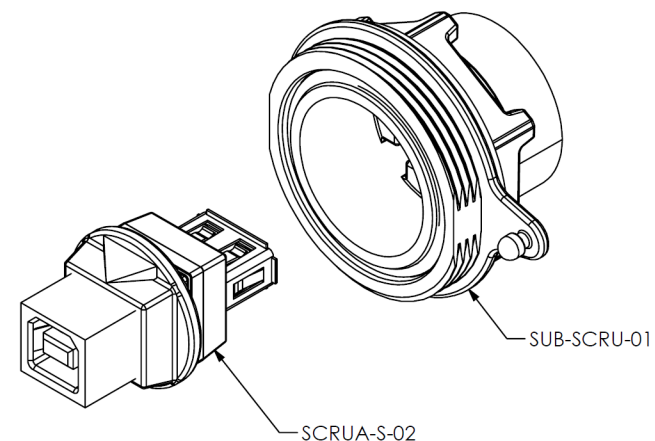
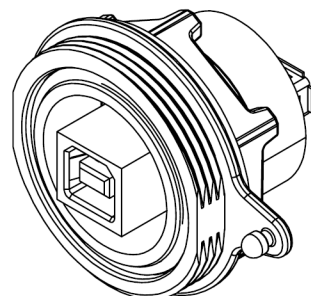
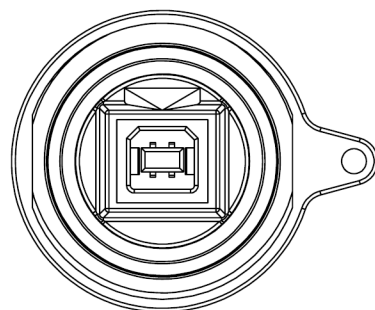
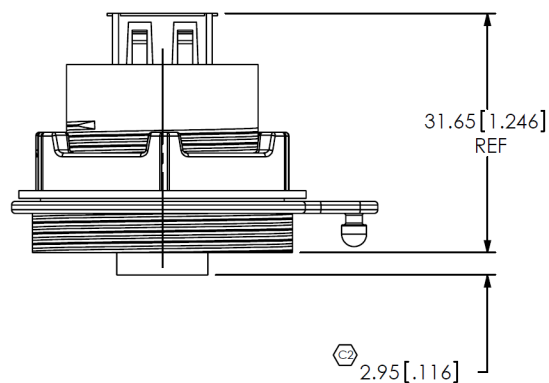


FIG. 2  
(SCRU-02 SHOWN)  
(SAME AS FIG. 1, UNLESS OTHERWISE STATED)



**PROPRIETARY NOTE**  
THIS DOCUMENT CONTAINS INFORMATION  
CONFIDENTIAL AND PROPRIETARY TO  
SAMTEC, INC. AND SHALL NOT BE REPRODUCED  
OR TRANSFERRED TO OTHER DOCUMENTS OR  
DISCLOSED TO OTHERS OR USED FOR ANY  
PURPOSE OTHER THAN THAT WHICH IT WAS  
OBTAINED WITHOUT THE EXPRESSED WRITTEN  
CONSENT OF SAMTEC, INC.

DO NOT SCALE DRAWING

SHEET SCALE: 1:1

**samtec**

520 PARK EAST BLVD, NEW ALBANY, IN 47150  
PHONE: 812-944-6733 FAX: 812-948-5047  
e-Mail info@SAMTEC.com code 55322

DESCRIPTION:  
USB PANEL MOUNT ASSEMBLY

DWG. NO.  
SCRU-XX

BY: CHAD F 12/13/2004 SHEET 2 OF 2