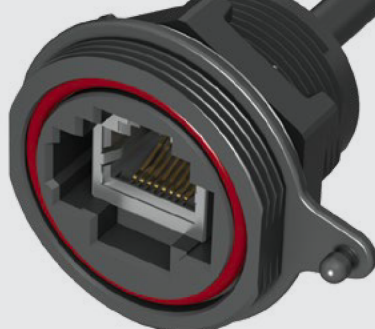
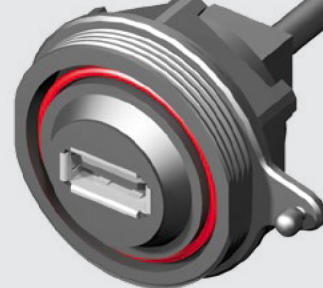




ACCLIMATE™



SCRUS-G-00.25-D-C5E



SCRUS-17-G-00.25-AMS-BC

SCRUS, SCRES SERIES

IP68 SEALED USB & ETHERNET

Mates with:
SCPU

SPECIFICATIONS

For complete specifications and recommended panel hole layout see www.samtec.com?SCRUS

Insulator Material: PBT

Contact Material: Phosphor Bronze

Wire:
20 AWG (Power)
25 AWG (Signal)
28 AWG (Drain)

O-Ring: Silicone

Operating Temp Range: -20 °C to +75 °C

RoHS Compliant: Yes

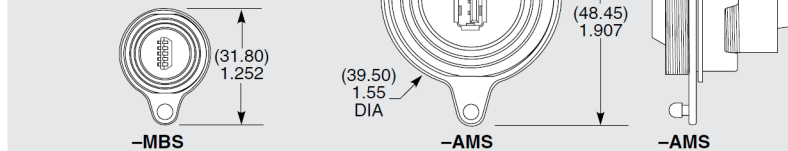
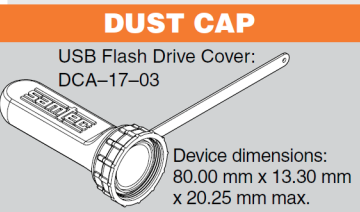
RECOGNITIONS

For complete scope of recognitions see www.samtec.com/quality



Note: Some lengths, styles and options are non-standard, non-returnable.

TYPE	SHELL SIZE	PLATING	WIRE LENGTH	END 1 OPTION	END 2 OPTION
SCRUS = Sealed Circular USB Receptacle Cable Assembly	-17 (Standard USB only) -10 (Mini USB only)	-G = 30 μ" (0.76 μm) Gold on Contact, Nickel on Shell	-00.25 = (0.25 m) 9.84" Cable -00.50 = (0.50 m) 19.68" Cable Standard lengths (Assembled Length = Wire Length + (37.9 mm) 1.50")	-AMS = USB A Type, Sealed -BMS = USB B Type, Sealed -MBS = Mini USB B Type, Sealed	-AM = USB A Type, Not Sealed -BM = USB B Type, Not Sealed -MB = Mini USB B Type, Not Sealed -BC = Blunt Cut



OTHER SOLUTIONS

- Termination for standard USB cable from panel-to-board See SCRU Series.

Mates with:
SCPE

SPECIFICATIONS

For complete specifications and recommended panel hole layout see www.samtec.com?SCRES

Insulator Material: PBT

Contact Material: Phosphor Bronze

Shield Material: Phosphor Bronze

Wire: 24 AWG

O-Ring: Silicone

Overmold: PA66

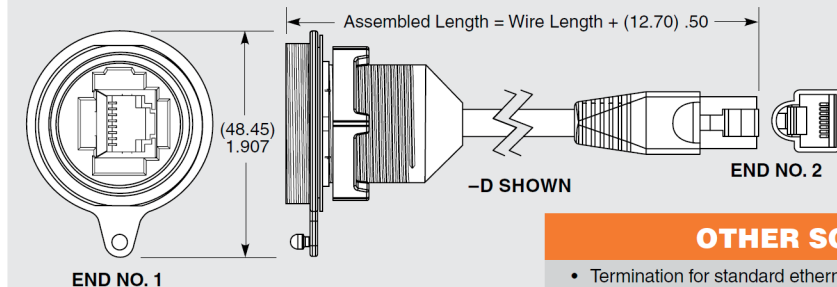
Current Rating: 3.8 A per pin (1 pin powered)

Operating Temp Range: -40 °C to +70 °C

RoHS Compliant: Yes

Note: Some lengths, styles and options are non-standard, non-returnable.

TYPE	PLATING	WIRE LENGTH	END OPTION	C5E
SCRES = Sealed Circular Ethernet Receptacle Cable Assembly	-G = 50 μ" (1.27 μm) Gold on Contact, Nickel on Shell	-00.25 = (0.25 m) 9.84" Cable -00.50 = (0.50 m) 19.68" Cable Standard lengths	-D = Double Ended -BC = Blunt Cut	-C5E = Cat 5e rating



DUST CAP & PANEL PLUG

- Dust Cap: DCA-17-01
- Panel Plug: SCPPA-17-01

Contact Samtec.

OTHER SOLUTIONS

- Termination for standard ethernet cable from panel to board Contact Samtec.

Due to technical progress, all designs, specifications and components are subject to change without notice.