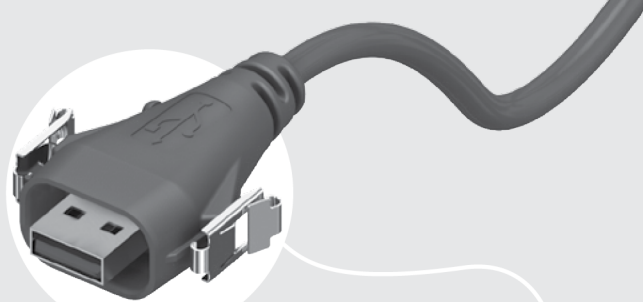




THE VITAL COMPONENT

ACCLIMATE™



RCU-G-02.00-AMS-AM

RCU SERIES

IP68 SEALED USB CABLE PLUG

SPECIFICATIONS

For complete specifications see www.samtec.com?RCU

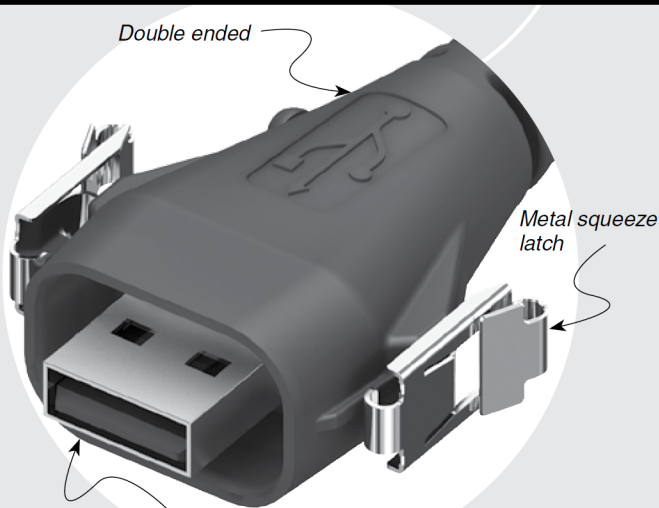
- Insulator Material:** Glass Filled Thermoplastic
- Contact Material:** Phosphor Bronze
- Current Rating:** 4.2 A per pin (1 pin powered)
- Operating Temp Range:** -20 °C to +80 °C
- Shield Material:** Phosphor Bronze
- Wire:** 20 AWG (Power)
25 AWG (Signal)
28 AWG (Drain)

Mates with:
RPCU, RPBU



Solutionator
DESIGN IN A MINUTE

- Easy sealed cable solutions
- Build a standard or flexible custom online
- Calculate performance, current rating, voltage drop
- Live chat with AccliMate™ engineers for custom options
- Variety of shells, pin sizes, signal, power, I/O interfaces
- Assembly and field kits available



DUST CAPS

- AMS = DCA-RCU-01-01-A
- BMS = DCA-RCU-01-01-B

ALSO AVAILABLE (MOQ Required)

- Other wire lengths
 - End option 2 with -AMS, -BMS or -BM
- Contact Samtec.

RCU

PLATING

-G
= 30 μ" (0.76 μm)
Gold on contact,
Nickel on shell

WIRE LENGTH

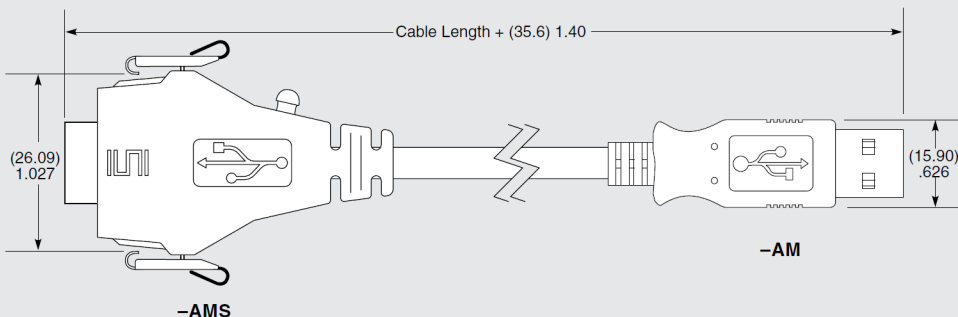
-01.00
= (1 m) 40" Cable
-02.00
= (2 m) 79" Cable
Standard lengths

END 1 OPTION

-AMS
= USB A Type,
Sealed
-BMS
= USB B Type,
Sealed

END 2 OPTION

-AM
= USB A Type,
Not Sealed
-BC
= Blunt Cut



Due to technical progress, all designs, specifications and components are subject to change without notice.

WWW.TOBY.CO.UK

All parts within this catalog are built to Samtec's specifications. Customer specific requirements must be approved by Samtec and identified in a Samtec customer-specific drawing to apply.