



ACCLIMATE™

MCRK-8-S



CC393-2830-L-S



MCRK, CC393 SERIES

# 8 SERIES IP67 FIELD TERMINATION KIT

Mates with:  
MCP(K)

## SPECIFICATIONS

For complete specifications  
see [www.samtec.com?MCRK](http://www.samtec.com?MCRK)

### Insulator Material:

PPS

### Contact Material:

Phosphor Bronze

### Operating Temp Range:

-20 °C to +80 °C

### Gasket Material:

Neoprene Rubber

### Lock Washer:

Phosphor Bronze, Ni plated

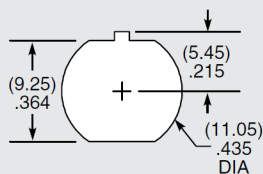
### Hex Nut:

Brass, Ni plated

### RoHS Compliant:

Yes

## PANEL OPENING



**Note:** Samtec's MCRK Series is dual sourced by Hirose Electric Co., LTD.

MCRK

8

GENDER

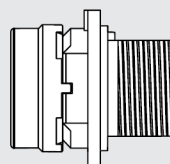
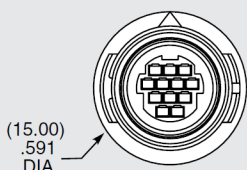
-S

= Socket (12 positions)

## DUST CAPS

- DCA-MCR-8

Visit [sealedio.samtec.com](http://sealedio.samtec.com) for a complete list of sealed systems



## SPECIFICATIONS

For complete specifications  
see [www.samtec.com?CC393](http://www.samtec.com?CC393)

### Plating:

10 µ" (0.25 µm) Gold on contact

## TOOLING

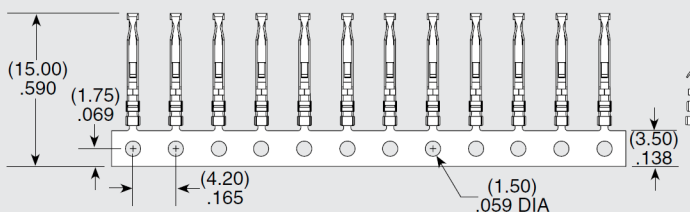
- Hand tool:  
CAT-HT-393-2430-13
- Mini Applicator  
(28-30 AWG):  
CAT-MC-393-2830-XX-01
- Extraction Tool:  
CAT-EX-MCX-8-01

TYPE

LEAD STYLE

L

PACKING OPTION

CC393  
= Contact-2830  
= 28 to 30 AWG-S  
= Strip  
(15 contacts)-M  
= Mini Reel  
(1,000 - 5,000 contacts)-R  
= Reel  
(20,000 contacts)

Due to technical progress, all designs, specifications and components are subject to change without notice.

[WWW.TOBY.CO.UK](http://WWW.TOBY.CO.UK)

All parts within this catalog are built to Samtec's specifications.

Customer specific requirements must be approved by Samtec and identified in a Samtec customer-specific drawing to apply.