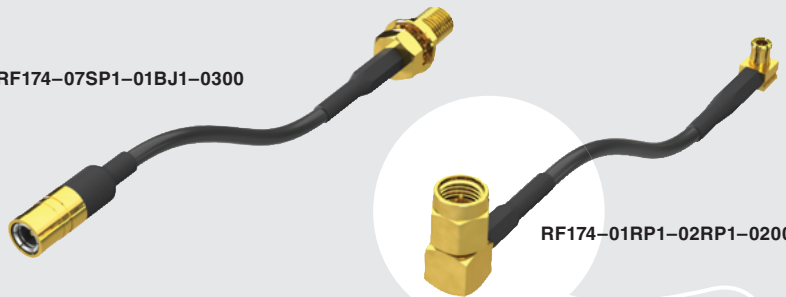


RF174-07SP1-01BJ1-0300



RF174-01RP1-02RP1-0200

50Ω RG 174 CABLE ASSEMBLIES

SPECIFICATIONS

For complete specifications see www.samtec.com?RF174

RF Connector:

Outer Contact Material:
Ni plated Brass (BNC)
Au plated Brass (SMB & SMA)
Au plated BeCu (MCX & MMCX)
Center Contact Material:
Au plated Brass (BNC-P, MCX-P, MMCX-P & SMA-P)
Au plated BeCu (SMB-P & SMA-J)
Au plated Phos. Bronze (BNC-J)
Insulator Material:
PTFE

Operating Temperature:
-50°C to +90°C
Insulator Resistance:
5,000 MΩ
Impedance:
50Ω

Frequency Range:
0-6 GHz
(Cable & connector dependent)
RoHS Compliant:
Yes

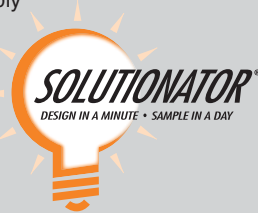
RG 174 Cable:

Impedance:
50Ω
Capacitance:
101.024 pF/meter
Max Attenuation (cable only):
1.4dB @ 1 GHz for 1 meter
Conductor Size:
26 AWG, (0.48 mm) .019" dia.
Conductor Material:
Copper
Insulator Material:
LEP
Shield Material:
Tin Copper
Jacket Material:
PVC
Jacket Diameter:
(2.70 mm) .106"
Jacket Color:
Black
Bend Radius:
25.4 mm
RoHS Compliant:
Yes

Mates with:
MCX, MMCX, MMCXV,
SMA, SMB5, BNC5,
TNC, NTPPE

THINK OUTSIDE THE CATALOG

- Create a full system: cable assembly and board level mates, 50Ω and 75Ω solutions
- 24-hour samples on standard products
- Visit: rf.samtec.com



Standard performance 26 AWG
RG 174 coax cable

2.3dK

Plugs and
Jacks

Straight or
Right Angle

Single or
Double Ended

CABLE TYPE

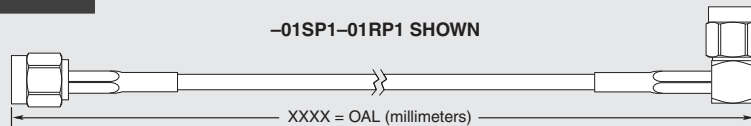
END 1
CONNECTOR

END 2
CONNECTOR

RF174
= RG 174 Cable

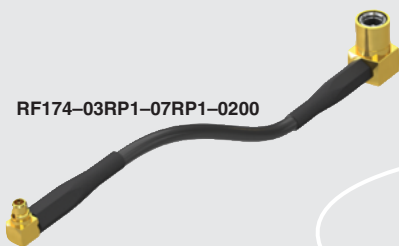
Specify END OPTIONS from chart

-01SP1-01RP1 SHOWN

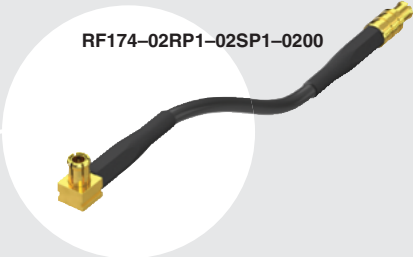


END OPTIONS	
-01SP1 = SMA Straight Plug (30μ" (0.76 μm) Gold on Center Contact, Gold Flash on Shell)	
-01RP1 = SMA Right Angle Plug (30μ" (0.76 μm) Gold on Center Contact, Gold Flash on Shell)	
-07SP1 = SMB Straight Plug (30μ" (0.76 μm) Gold on Center Contact, Gold Flash on Shell)	
-07RP1 = SMB Right Angle Plug (30μ" (0.76 μm) Gold on Center Contact, Gold Flash on Shell)	
-02SJ1 = MCX Straight Jack (30μ" (0.76 μm) Gold on Center Contact, Gold Flash on Shell)	

END OPTIONS	
-02RP1 = MCX Right Angle Plug (30μ" (0.76 μm) Gold on Center Contact, Gold Flash on Shell)	
-02SP1 = MCX Straight Plug (30μ" (0.76 μm) Gold on Center Contact, Gold Flash on Shell)	
-03SP1 = MMCX Straight Plug (30μ" (0.76 μm) Gold on Center Contact, Gold Flash on Shell)	
-03RP1 = MMCX Right Angle Plug (30μ" (0.76 μm) Gold on Center Contact, Gold Flash on Shell)	
-V3SP1 = MMCXV Straight Plug, High Vibration (30μ" (0.76 μm) Gold on Center Contact, Nickel on Shell)	
-V3RP1 = MMCXV Right Angle Plug, High Vibration (30μ" (0.76 μm) Gold on Center Contact, Nickel on Shell)	
-V3SJ1 = MMCXV Straight Jack, High Vibration (30μ" (0.76 μm) Gold on Center Contact, Nickel on Shell)	



RF174-03RP1-07RP1-0200



RF174-02RP1-02SP1-0200



RF174-04BJ2-07SP1-0100

RF174 SERIES



ALSO AVAILABLE (MOQ Required)

- Additional stripping and tinning options
- IP67 TNC option
- Additional plating options
- Additional end connector combinations
- Knurled nuts with BNC option
- Contact Samtec.



OTHER SOLUTIONS

- Cable connector kits (see cable components catalog pages)

OVERALL LENGTH

—“XXXX”

= Overall Length in millimeters -0100 (100 mm) minimum
(Cable lengths larger than 1000 millimeters are not supported by S.I. Test data)

END OPTIONS	
<p>-04SP3 = BNC Straight Plug (10µ" (0.25 µm) Gold on Center Contact, Nickel on Shell)</p>	
<p>-05SP3 = TNC Straight Plug (10µ" (0.25 µm) Gold on Center Contact, Nickel on Shell)</p>	
<p>-07BJ1 = SMB Bulkhead Jack (30µ" (0.76 µm) Gold on Center Contact, Gold Flash on Shell)</p>	
<p>-01BJ1 = SMA Straight Bulkhead Jack -01SB1 = SMA Straight Bulkhead Jack, Sealed -01SR1 = SMA Straight Bulkhead Jack, Sealed, Reversed Polarity -01BR1 = SMA Straight Bulkhead Jack, Reversed Polarity (30µ" (0.76 µm) Gold on Center Contact, Gold Flash on Shell)</p>	

END OPTIONS	
<p>-01PN1 = SMA 4-Hole Panel Mount Jack (30µ" (0.76 µm) Gold on Center Contact, Gold Flash on Shell)</p>	
<p>-04BJ2 = BNC Bulkhead Jack (30µ" (0.76 µm) Gold on Center Contact, Nickel on Shell)</p>	
<p>-05BJ3 = TNC Bulkhead Jack (10µ" (0.25 µm) Gold on Center Contact, Nickel on Shell)</p>	
<p>-06BJ2 = N Type Bulkhead Jack (30µ" (0.76 µm) Gold on Center Contact, Nickel on Shell)</p>	

END OPTIONS			
<p>-SING = Single Ended (End 2 Callout)</p>			
<p>XXXXXX = Stripped & Tinned (End 2 Callout)</p>			
STRIPPED & TINNED (Dimensions in mm)			
CALLOUT	A	B	C
-303030	3.0	3.0	3.0
-303040	3.0	3.0	4.0
-403030	4.0	3.0	3.0
-403040	4.0	3.0	4.0
-404040	4.0	4.0	4.0
<p>Both center conductor and braid shield are stripped, only the center conductor is tinned.</p>			