

LED MOUNTS/SPACERS

Molded Vertical LED Holders

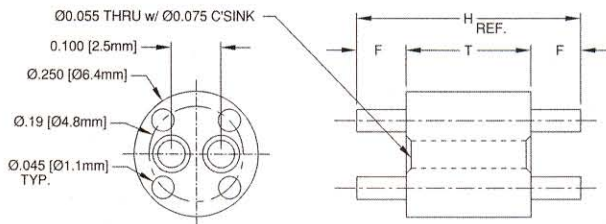
- Funnel Shaped Lead Entry Holes for Assembly Ease
- Feet Facilitate Cleaning and Inspection
- Molded of White Nylon per ASTM D-4066
- Made from 94V-2 Rated Nylon

Material Specifications:

UL Rated 94V-2 White Nylon
per ASTM D4066 PA111

Oxygen Index: +28%

UL File #E135532



450 Series		Color: White Price Code: A	
------------	--	-------------------------------	--

Part No.	H	T	F
450-050	.050 (1.3)	.030 (.76)	.010 (.25)
450-060	.060 (1.5)	.030 (.76)	.015 (.38)
450-070	.070 (1.8)	.030 (.76)	.020 (.51)
450-080	.080 (2.0)	.030 (.76)	.025 (.64)
450-090	.090 (2.3)	.030 (.76)	.030 (.76)
450-100	.100 (2.5)	.030 (.76)	.035 (.89)
450-110	.110 (2.8)	.030 (.76)	.040 (1.0)
450-120	.120 (3.0)	.030 (.76)	.045 (1.1)
450-130	.130 (3.3)	.030 (.76)	.050 (1.3)
450-140	.140 (3.6)	.030 (.76)	.055 (1.4)
450-150	.150 (3.8)	.030 (.76)	.060 (1.5)
450-160	.160 (4.1)	.030 (.76)	.065 (1.7)
450-170	.170 (4.3)	.030 (.76)	.070 (1.8)
450-180	.180 (4.6)	.030 (.76)	.075 (1.9)
450-190	.190 (4.8)	.030 (.76)	.080 (2.0)
450-200	.200 (5.1)	.030 (.76)	.085 (2.2)

455 Series		Color: White Price Code: A	
------------	--	-------------------------------	--

Part No.	H	T	F
455-200	.200 (5.1)	.150 (3.8)	.025 (.64)
455-210	.210 (5.3)	.150 (3.8)	.030 (.76)
455-220	.220 (5.6)	.150 (3.8)	.035 (.89)
455-230	.230 (5.8)	.150 (3.8)	.040 (1.0)
455-240	.240 (6.1)	.150 (3.8)	.045 (1.1)
455-250	.250 (6.4)	.150 (3.8)	.050 (1.3)
455-260	.260 (6.6)	.150 (3.8)	.055 (1.4)
455-270	.270 (6.9)	.150 (3.8)	.060 (1.5)
455-280	.280 (7.1)	.150 (3.8)	.065 (1.7)
455-290	.290 (7.4)	.150 (3.8)	.070 (1.8)
455-300	.300 (7.6)	.150 (3.8)	.075 (1.9)
455-310	.310 (7.9)	.150 (3.8)	.080 (2.0)
455-320	.320 (8.1)	.150 (3.8)	.085 (2.2)
455-330	.330 (8.4)	.150 (3.8)	.090 (2.3)
455-340	.340 (8.6)	.150 (3.8)	.095 (2.4)
455-350	.350 (8.9)	.150 (3.8)	.100 (2.5)

456 Series		Color: White Price Code: B	
------------	--	-------------------------------	--

Part No.	H	T	F
456-350	.350 (8.9)	.300 (7.6)	.025 (.64)
456-360	.360 (9.1)	.300 (7.6)	.030 (.76)
456-370	.370 (9.4)	.300 (7.6)	.035 (.89)
456-380	.380 (9.7)	.300 (7.6)	.040 (1.0)
456-390	.390 (9.9)	.300 (7.6)	.045 (1.1)
456-400	.400 (10.2)	.300 (7.6)	.050 (1.3)
456-410	.410 (10.4)	.300 (7.6)	.055 (1.4)
456-420	.420 (10.7)	.300 (7.6)	.060 (1.5)
456-430	.430 (10.9)	.300 (7.6)	.065 (1.7)
456-440	.440 (11.2)	.300 (7.6)	.070 (1.8)
456-450	.450 (11.4)	.300 (7.6)	.075 (1.9)
456-460	.460 (11.7)	.300 (7.6)	.080 (2.0)
456-470	.470 (11.9)	.300 (7.6)	.085 (2.2)
456-480	.480 (12.2)	.300 (7.6)	.090 (2.3)
456-490	.490 (12.4)	.300 (7.6)	.095 (2.4)
456-500	.500 (12.7)	.300 (7.6)	.100 (2.5)

457 Series		Color: White Price Code: F	
------------	--	-------------------------------	--

Part No.	H	T	F
457-510	.510 (13.0)	.490 (12.4)	.010 (.25)
457-530	.530 (13.5)	.490 (12.4)	.020 (.51)
457-550	.550 (14.0)	.490 (12.4)	.030 (.76)
457-570	.570 (14.5)	.490 (12.4)	.040 (1.0)
457-590	.590 (15.0)	.490 (12.4)	.050 (1.3)
457-610	.610 (15.5)	.490 (12.4)	.060 (1.5)
457-630	.630 (16.0)	.490 (12.4)	.070 (1.8)
457-650	.650 (16.5)	.490 (12.4)	.080 (2.0)
457-670	.670 (17.0)	.490 (12.4)	.090 (2.3)
457-690	.690 (17.5)	.490 (12.4)	.100 (2.5)

458 Series		Color: White Price Code: G	
------------	--	-------------------------------	--

Part No.	H	T	F
458-700	.700 (17.8)	.680 (17.3)	.010 (.25)
458-720	.720 (18.3)	.680 (17.3)	.020 (.51)
458-740	.740 (18.8)	.680 (17.3)	.030 (.76)
458-760	.760 (19.3)	.680 (17.3)	.040 (1.0)
458-780	.780 (19.8)	.680 (17.3)	.050 (1.3)
458-800	.800 (20.3)	.680 (17.3)	.060 (1.5)
458-820	.820 (20.8)	.680 (17.3)	.070 (1.8)
458-840	.840 (21.3)	.680 (17.3)	.080 (2.0)
458-860	.860 (21.8)	.680 (17.3)	.090 (2.3)
458-880	.880 (22.4)	.680 (17.3)	.100 (2.5)

459 Series		Color: White Price Code: H	
------------	--	-------------------------------	--

Part No.	H	T	F
459-900	.900 (22.9)	.880 (22.4)	.010 (.25)
459-920	.920 (23.4)	.880 (22.4)	.020 (.51)
459-940	.940 (23.9)	.880 (22.4)	.030 (.76)
459-960	.960 (24.4)	.880 (22.4)	.040 (1.0)
459-980	.980 (24.9)	.880 (22.4)	.050 (1.3)
459-1000	1.000 (25.4)	.880 (22.4)	.060 (1.5)
459-1020	1.020 (25.9)	.880 (22.4)	.070 (1.8)
459-1040	1.040 (26.4)	.880 (22.4)	.080 (2.0)
459-1060	1.060 (26.9)	.880 (22.4)	.090 (2.3)
459-1080	1.080 (27.4)	.880 (22.4)	.100 (2.5)

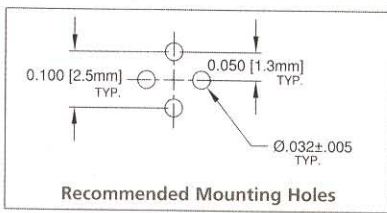
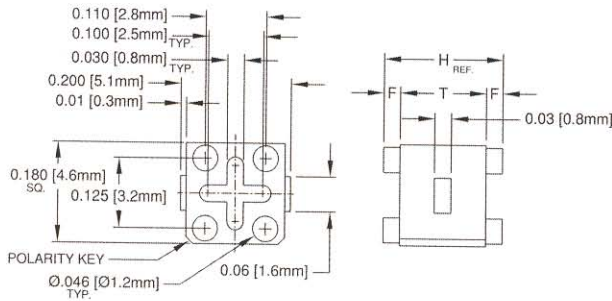
LED MOUNTS/SPACERS

T-1 (3mm) and T-1³/₄ (5mm) Individual LED Mounts

- 53 Different Sizes and Elevations
- Vertical Mounts Assure Accurate LED Positioning
- Compatible with 3mm or 5mm LEDs
- Molded from Natural Nylon per ASTM D-4066
- Made from 94V-2 Rated Nylon



Perfectly suited for in-line or grid alignment of LEDs, these T-1 (3mm) or T-1³/₄ (5mm) individual mounts provide a simple, effective solution to accurate LED placement, while standoffs on top and bottom allow for board cleaning and inspection.



460 Series

Color: Natural
Price Code: A

Part No.	H	T	F
460-060	.060 (1.5)	.040 (1.0)	.010 (.25)
460-070	.070 (1.8)	.040 (1.0)	.015 (.38)
460-080	.080 (2.0)	.040 (1.0)	.020 (.51)
460-090	.090 (2.3)	.040 (1.0)	.025 (.64)
460-100	.100 (2.5)	.040 (1.0)	.030 (.76)
460-110	.110 (2.8)	.040 (1.0)	.035 (.89)
460-120	.120 (3.0)	.040 (1.0)	.040 (1.0)
460-130	.130 (3.3)	.040 (1.0)	.045 (1.1)
460-140	.140 (3.6)	.040 (1.0)	.050 (1.3)
460-150	.150 (3.8)	.040 (1.0)	.055 (1.4)
460-160	.160 (4.1)	.040 (1.0)	.060 (1.5)
460-170	.170 (4.3)	.040 (1.0)	.065 (1.7)
460-180	.180 (4.6)	.040 (1.0)	.070 (1.8)
460-190	.190 (4.8)	.040 (1.0)	.075 (1.9)
460-200	.200 (5.1)	.040 (1.0)	.080 (2.0)
460-210	.210 (5.3)	.040 (1.0)	.085 (2.2)

461 Series

Color: Natural
Price Code: B

Part No.	H	T	F
461-360	.360 (9.1)	.340 (8.6)	.010 (.25)
461-380	.380 (9.7)	.340 (8.6)	.020 (.51)
461-400	.400 (10.2)	.340 (8.6)	.030 (.76)
461-420	.420 (10.7)	.340 (8.6)	.040 (1.0)
461-440	.440 (11.2)	.340 (8.6)	.050 (1.3)
461-460	.460 (11.7)	.340 (8.6)	.060 (1.5)
461-480	.480 (12.2)	.340 (8.6)	.070 (1.8)
461-500	.500 (12.7)	.340 (8.6)	.080 (2.0)
461-520	.520 (13.2)	.340 (8.6)	.090 (2.3)
461-540	.540 (13.7)	.340 (8.6)	.100 (2.5)

462 Series

Color: Natural
Price Code: F

Part No.	H	T	F
462-560	.560 (14.2)	.540 (13.7)	.010 (.25)
462-580	.580 (14.7)	.540 (13.7)	.020 (.51)
462-600	.600 (15.2)	.540 (13.7)	.030 (.76)
462-620	.620 (15.7)	.540 (13.7)	.040 (1.0)
462-640	.640 (16.3)	.540 (13.7)	.050 (1.3)
462-660	.660 (16.8)	.540 (13.7)	.060 (1.5)
462-680	.680 (17.3)	.540 (13.7)	.070 (1.8)
462-700	.700 (17.8)	.540 (13.7)	.080 (2.0)
462-720	.720 (18.3)	.540 (13.7)	.090 (2.3)
462-730	.730 (18.5)	.540 (13.7)	.095 (2.4)
462-740	.740 (18.8)	.540 (13.7)	.100 (2.5)

465 Series

Color: Natural
Price Code: B

Part No.	H	T	F
465-200	.200 (5.1)	.150 (3.8)	.025 (.64)
465-210	.210 (5.3)	.150 (3.8)	.030 (.76)
465-220	.220 (5.6)	.150 (3.8)	.035 (.89)
465-230	.230 (5.8)	.150 (3.8)	.040 (1.0)
465-240	.240 (6.1)	.150 (3.8)	.045 (1.1)
465-250	.250 (6.4)	.150 (3.8)	.050 (1.3)
465-260	.260 (6.6)	.150 (3.8)	.055 (1.4)
465-270	.270 (6.9)	.150 (3.8)	.060 (1.5)
465-280	.280 (7.1)	.150 (3.8)	.065 (1.7)
465-290	.290 (7.4)	.150 (3.8)	.070 (1.8)
465-300	.300 (7.6)	.150 (3.8)	.075 (1.9)
465-310	.310 (7.9)	.150 (3.8)	.080 (2.0)
465-320	.320 (8.1)	.150 (3.8)	.085 (2.2)
465-330	.330 (8.4)	.150 (3.8)	.090 (2.3)
465-340	.340 (8.6)	.150 (3.8)	.095 (2.4)
465-350	.350 (8.9)	.150 (3.8)	.100 (2.5)