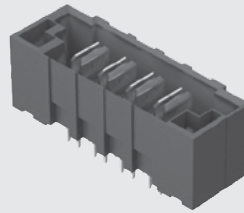
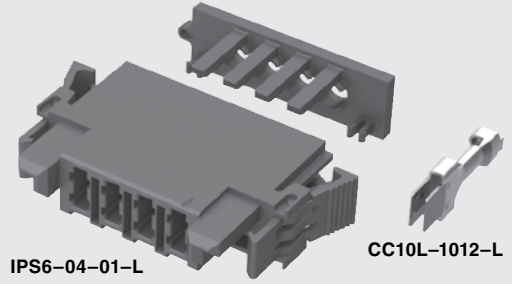




POWER STRIPTM 40



PET-04-01-L-VT



IPS6-04-01-L

CC10L-1012-L

(6.35 mm) .250"

IPS6, CC10, PET SERIES

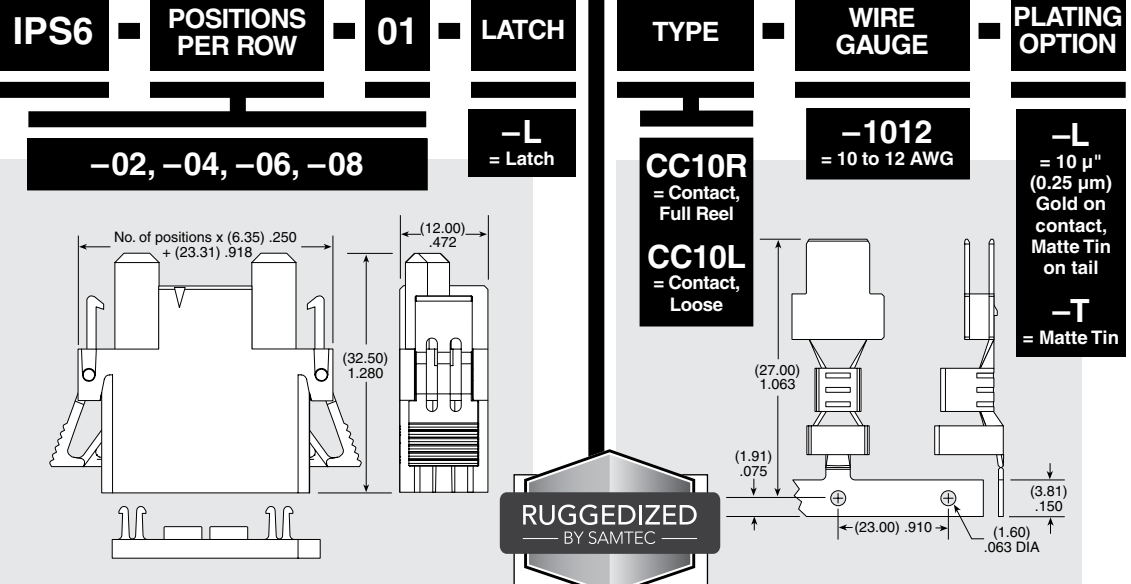
DISCRETE WIRE COMPONENTS & TOOLING

SPECIFICATIONS

For complete specifications see www.samtec.com?IPS6 or www.samtec.com?CC10

TOOLING

- Hand Tool: CAT-HT-310-1012-14
- Mini Applicator: CAT-MC-310-1012-XX-02



Mates with: PES, PESS

SPECIFICATIONS

For complete specifications see www.samtec.com?PET

Insulator Material: Black LCP
Terminal Material: Copper Alloy

Plating: Sn or Au over 50 μ" (1.27 μm) Ni

Operating Temp Range: -55 °C to +105 °C with Tin
-55 °C to +125 °C with Gold

Voltage Rating: 725 VAC/1025 VDC

RoHS Compliant: Yes

Lead-Free Solderable: Yes

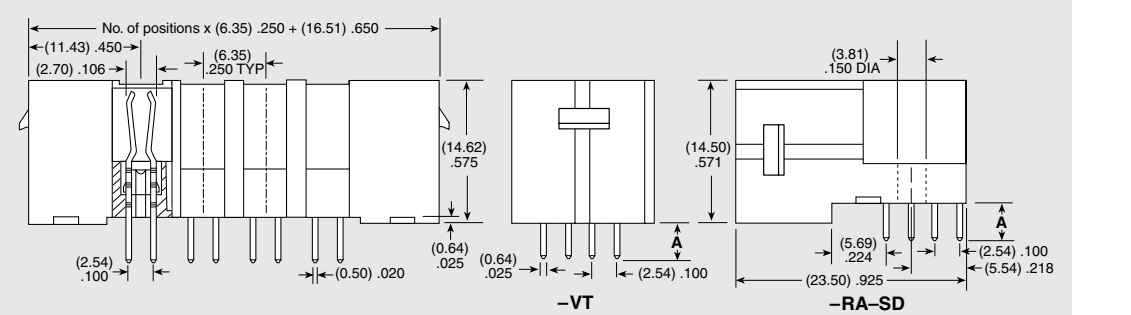
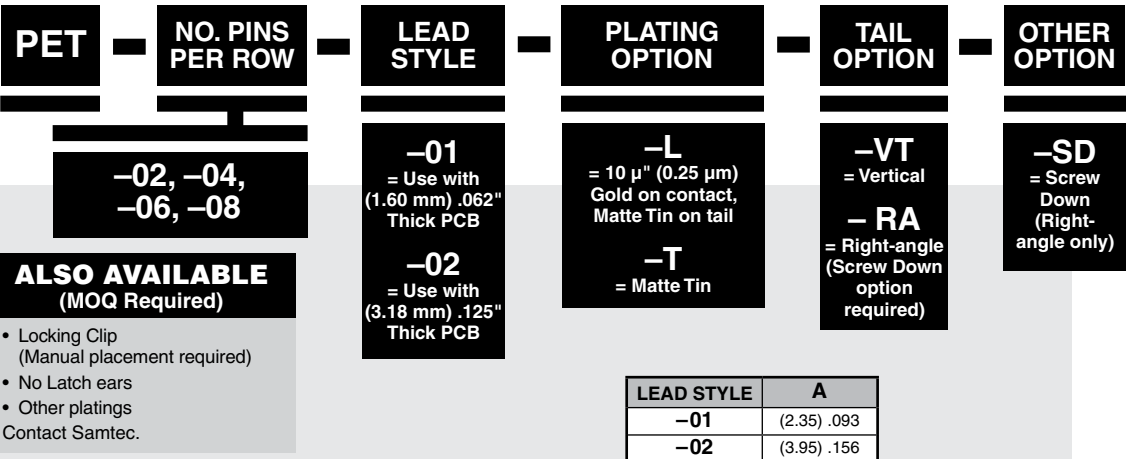
Yes

RECOGNITIONS

For complete scope of recognitions see www.samtec.com/quality



FILE NO. E111594



Note: Some sizes, styles and options are non-standard, non-returnable.