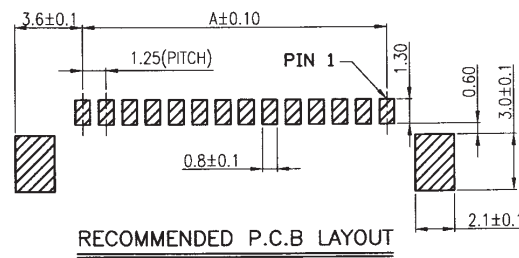
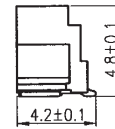
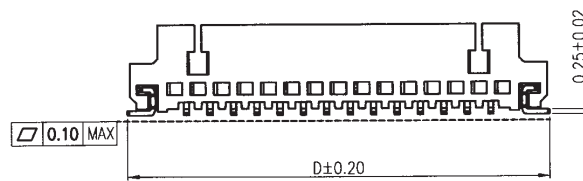
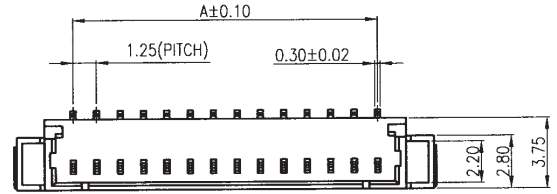
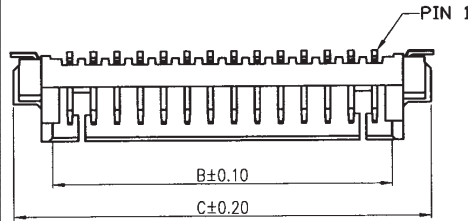
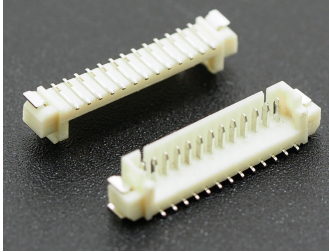


# 1.25mm Pitch Single Row Straight Surface Mount Shrouded Wire-to-Board Headers

## 0800-Wxx-ST-SMT Series

UL Approved Number E182481 - Tin plated contacts - Mates with Valcon 0800-Hxx series crimp housings



 US E182481

Circuits	Dimension (mm)				Circuits	Dimension (mm)			
	A	B	C	D		A	B	C	D
2	1.25	3.10	7.35	7.55	10	11.25	13.10	17.35	17.55
3	2.50	4.35	8.60	8.80	11	12.50	14.35	18.60	18.80
4	3.75	5.60	9.85	10.05	12	13.75	15.60	19.85	20.05
5	5.00	6.85	11.10	11.30	13	15.00	16.85	21.10	21.30
6	6.25	8.10	12.35	12.55	14	16.25	18.10	22.35	22.55
7	7.50	9.35	13.60	13.80	15	17.50	19.35	23.60	23.80
8	8.75	10.60	14.85	15.05	16	18.75	20.60	24.85	25.05
9	10.00	11.85	16.10	16.30	—	—	—	—	—

### Ordering Information:

**0800- Wxx - ST - SMT**

**1**

### Option 1(xx)

Number of contacts (in total)  
**02,03,04,05,06,07,08,**  
**09,10,11,12,13,14,15 & 16**

*Please note - some sizes may be subject to MOQ*

### Specification:

Insulator Material:	High Temperature plastic UL94V-0
Insulator Colour:	Natural (light grey)
Contact Material:	Brass
Contact Plating:	Tin
Current Rating:	1 Amp
Rated Voltage:	100V AC/DC
DWV:	250V AC for 1 minute
Insulation Resistance:	100MΩ min. @500V
Contact Resistance:	20mΩ Max. (initial) 40mΩ Max. (final)
Operating Temperature:	-25°C to +85°C
Tolerance:	±0.35mm ~ ±0.05mm
Approvals:	UL Number E182481