

B27d FEMALE HEADER SMT

PITCH: 2.54mm * 2.54mm

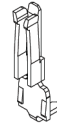
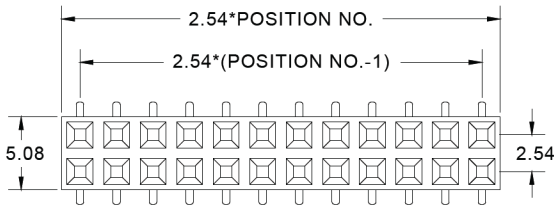
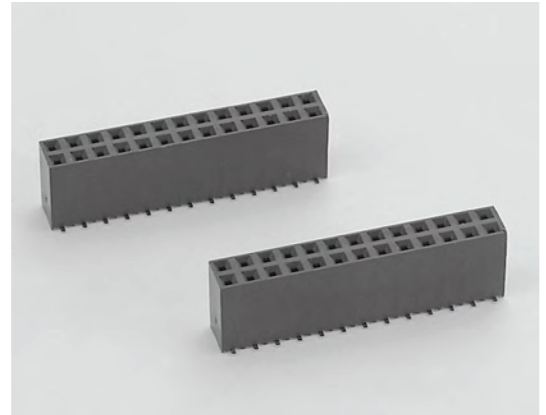
SPECIFICATIONS

Material

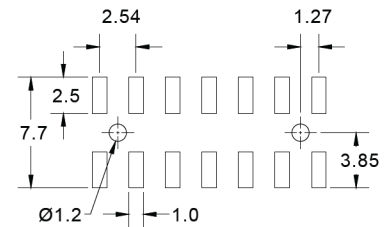
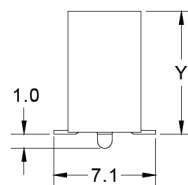
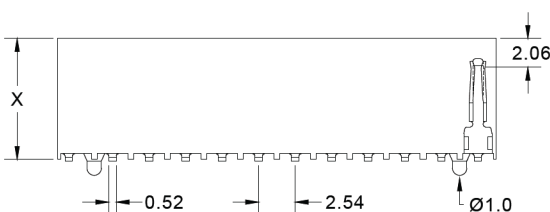
Insulator : LCP, glass reinforced, rated UL 94V-0
 Contact : Phosphor Bronze

Electrical

Current Rating : 1 Amp
 Contact Resistance : 30 mΩ max.
 Insulation Resistance : 3000 MΩ min.
 Dielectric Withstanding Voltage : 500V AC for 1minute
 Operating Temperature : -40°C to +105°C
 ► Mating Suggestion : C17, C18, C20 & C25 series.



HEIGHT	X	Y
A	8.4	8.5
B	9.4	9.5
C	10.9	11.0



RECOMMENDED P.C.B LAYOUT

How to order: B27d - 1 - 2 - 3 - 4 - 5 - 6 - 7 - G(RoHS)

1.NO. OF CONTACT		2.CONTACT MATERIAL		3.CONTACT PLATING	
DUAL ROW 2*2 - 2*50		B: PHOSPHOR BRONZE		T: TIN PLATED S: SELECTIVE G: GOLD FLASH	
4.INSULATOR HEIGHT	5.SPECIAL FUNCTION	6.PACKAGING	7. INSULATOR COLOR	A: 5u" INCH GOLD B: 10u" INCH GOLD C: 15u" INCH GOLD D: 30u" INCH GOLD	
A: 8.4mm B: 9.4mm C: 10.9mm	A: WITH LOCATING PEG B: W/O LOCATING PEG	A:TUBE WITH PAD B: TUBE W/O PAD C: TAPE & REEL WITH PAD	1. BLACK 		