

FOPC-02-02-003-12-01

OPA-S-1-F

FOPC, OPA SERIES

OPTICAL PATCH CABLE AND ADAPTOR

SPECIFICATIONS

Compliant Specifications:
TIA-604-5-D (FOCIS 5)
TIA-568-C.3
IEC-61754-7-1

FOPC

END 1

END 2

CABLE LENGTH

FIBERS

CONSTRUCTION

–01
= MTP Male

–02
= MTP Female

–01
= MTP Male

–02
= MTP Female

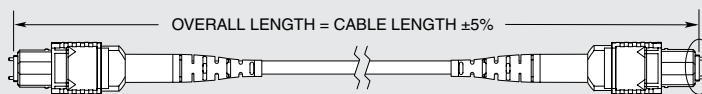
–003
= 3 Meters

–010
= 10 Meters

–100
= 100 Meters
(Other lengths available as custom parts)

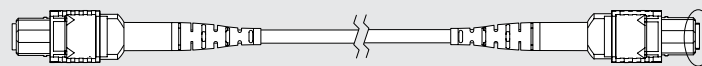
–12,
–24

–01
= 3 mm Round Jacket



–01-01-XXX-12-01

12 FIBER



–02-02-XXX-24-01

24 FIBER

Note: Some lengths, styles and options are non-standard, non-returnable.

SPECIFICATIONS

Compliant Specifications:
TIA-604-5-D (FOCIS 5)
IEC-61754-7

Recommended Panel Thickness:
(1.75 mm) .069"
(The OPA can be installed with any panel thickness but mounting hardware is needed for any thickness that is not (1.75 mm) .069".)

OPA

PORTS

KEY

FLANGE

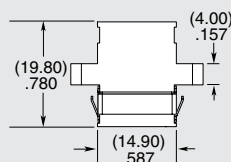
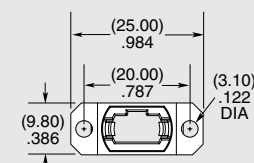
–S
= Single

–D
= Double

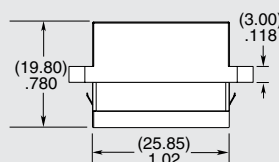
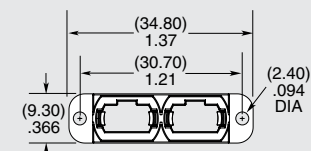
–1
= Opposed

–2
= Aligned

–F
= Full



–S



–D

Note: Some lengths, styles and options are non-standard, non-returnable.

Due to technical progress, all designs, specifications and components are subject to change without notice.

WWW.TOBY.CO.UK

All parts within this catalog are built to Samtec's specifications.
Customer specific requirements must be approved by Samtec and identified in a Samtec customer-specific drawing to apply.