



(2,00 mm) .0787"

TIGER EYE™ SOCKET STRIP

SMM SERIES

SPECIFICATIONS

For complete specifications and recommended PCB layouts see www.samtec.com?SMM

Insulator Material:

Black Liquid Crystal Polymer

Contact Material:

BeCu

Plating: Sn or Au over 50µ" (1,27 µm) Ni

Current Rating (TMM/SMM):

3.2 A per pin
(1 pin powered per row)

Voltage Rating:

350 VAC

Operating Temp Range:

-55°C to +125°C

Contact Resistance:

10 mΩ

Insertion Depth:

(3,05 mm) .120" to

(3,25 mm) .128"

Insertion Force:

(Single contact only)

2.0 oz (0,56 N) average

Withdrawal Force:

(Single contact only)

1.5 oz (0,42 N) average

Max Cycles:

100 with 10µ" (0,25 µm) Au

RoHS Compliant:

Yes

Processing:

Lead-Free Solderable:

Yes

SMT Lead Coplanarity:

(0,10 mm) .004" max

RECOGNITIONS

For complete scope of recognitions see www.samtec.com/quality



FILE NO. E111594

ALSO AVAILABLE (MOQ Required)

- Locking clip (Manual placement required)
 - Other platings
- Contact Samtec.

POLARIZING KEY

Specify PK-01-07 for polarizing key (Available in wheels of six each). Also polarizes TCSD Series IDC Cable.

Mates with:

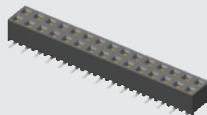
TMM, TMMH, MTMM, MMT, LTMM, TW, TCMD, PTT, ZLTMM



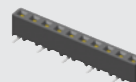
EXTENDED LIFE PRODUCT

10 year Mixed Flowing Gas with 30µ" Gold
Call Samtec for maximum mated cycles

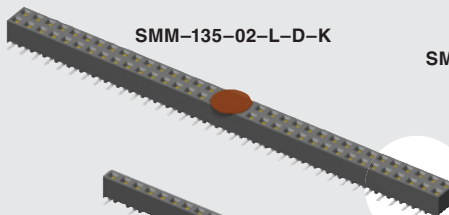
SMM-115-02-S-D



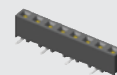
SMM-110-02-L-S



SMM-135-02-L-D-K

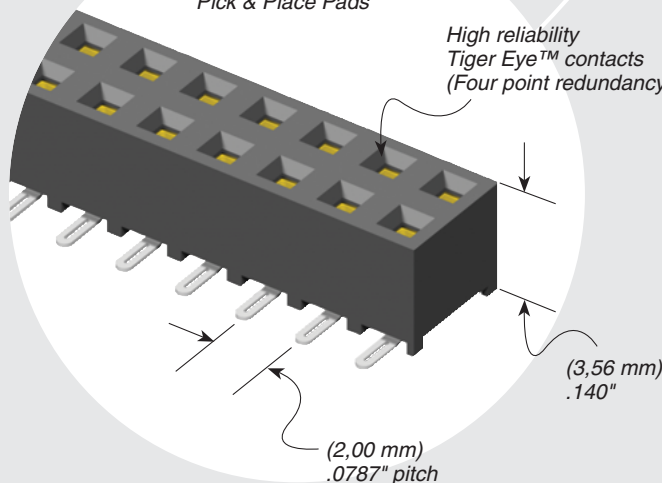


SMM-108-02-L-S



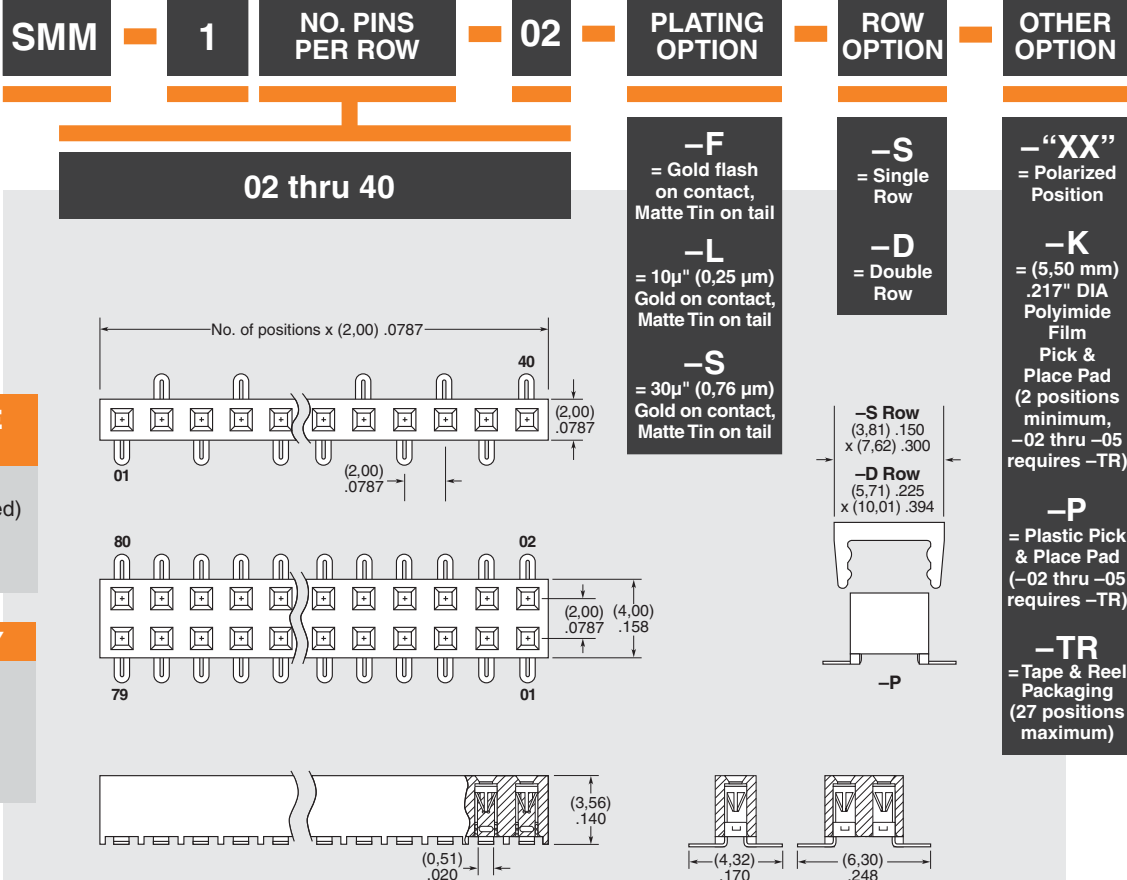
Available with optional
Pick & Place Pads

High reliability
Tiger Eye™ contacts
(Four point redundancy)



(3,56 mm)
.140"

(2,00 mm)
.0787" pitch



Note: Some lengths, styles and options are non-standard, non-returnable.