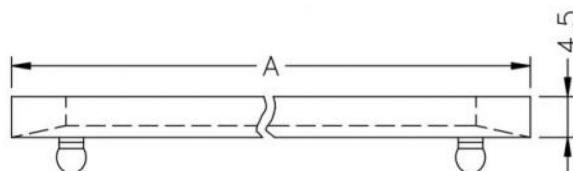
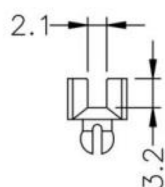


MOUNTING HOLES
CHASSIS THICKNESS:0.8~1.2



| A | B |
|------|------|
| 63.5 | 50.8 |

| | | | | | | | | | | | |
|-------------|--|-------|--------------------|------|--|-----------------------------|--|-----|---------|--|--|
| PART NUMBER | | | CG-250 | | | See page 2 for other sizes. | | | | | |
| TITLE | | | CARD GUIDE | | | | | | | | |
| MATERIAL | | | NYLON 66(UL) 94V-0 | | | COLOR | | | NATURAL | | |
| SIZE | | SCALE | | UNIT | | CHECK | | Z.C | | | |
| A4 | | 2:1 | | mm | | | | | | | |

| | | | |
|---------|---|-------|--|
| PART NO | A | B | |
| CG-300 | 76.2 | 63.5 | |
| | [1] NYLON 66(UL), Flame class: 94V-0/94V-2, Color: BLACK/NATURAL. | | |
| CG-350 | 88.9 | 76.2 | |
| | [1] NYLON 66(UL), Flame class: 94V-0/94V-2, Color: BLACK/NATURAL. | | |
| CG-400 | 101.6 | 88.9 | |
| | [1] NYLON 66(UL), Flame class: 94V-0/94V-2, Color: BLACK/NATURAL. | | |
| CG-450 | 114.3 | 101.6 | |
| | [1] NYLON 66(UL), Flame class: 94V-0/94V-2, Color: BLACK/NATURAL. | | |
| CG-500 | 127.0 | 114.3 | |
| | [1] NYLON 66(UL), Flame class: 94V-0/94V-2, Color: BLACK/NATURAL. | | |
| CG-550 | 139.7 | 127.0 | |
| | [1] NYLON 66(UL), Flame class: 94V-0/94V-2, Color: BLACK/NATURAL. | | |
| CG-600 | 152.4 | 139.7 | |
| | [1] NYLON 66(UL), Flame class: 94V-0/94V-2, Color: BLACK/NATURAL. | | |

