



**MINI/CIRCULAR DINs: KMDLAX Series
Snap and Lock Cable Mount Plug**

Product Features

Audio, Video, Lap Top Computer and Other Portable Digital Equipment Applications
 Snap and Lock Feature Helps Prevent Accidental Disconnects
 Supplied in Kits Ready for Assembly
 Gold Plating Available Upon Request

Performance Specifications

Materials and Finish

Insert
 Nylon, Black Color, ULHB Rated
Plastic Shell
 ABS, UL 94HB Rated
Contact Material
 Brass, Silver Plated
Shield
 Iron Steel, Nickel Plated

Mechanical Characteristics

Suggested Wire Gauge

26-30 Awg.

Insertion Force

4.5kg Max.

Extraction Force

0.5kg - 3.0kg

Durability

1500 Cycles

Electrical Characteristics

Contact Current Rating

2.0A Max. @12V DC and 30°C
 1.25A Max. @32V DC and 30°C
 1.0A Max. @32V DC and 45°C

Insulation Resistance

50 Megohm Min. at 250V DC

Dielectric Withstanding Voltage

250V AC for 1 Minute

Operating Temperature

-25°C to + 80°C



Generated Part Number

KMDLAX-3P-KPPSR

Part Number Builder

KMDLAX	-	3	P	KPPSR
Series		Number of Contacts	Contact Type	Strain Relief Diameters

Series

KMDLAX - Snap and Lock Plug

Number of Contacts

- 3 Contacts
- 4 Contacts
- 5 Contacts
- 6 Contacts
- 7 Contacts
- 8 Contacts

Contact Type

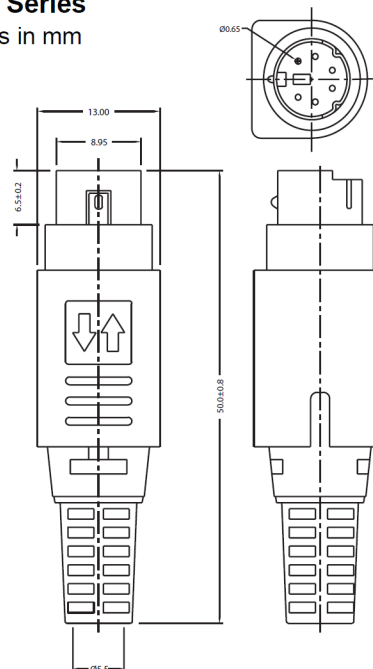
P - Plug

Strain Relief Diameters

Blank - Ø5.5mm (Standard)
 KPPSR - Ø6.35mm

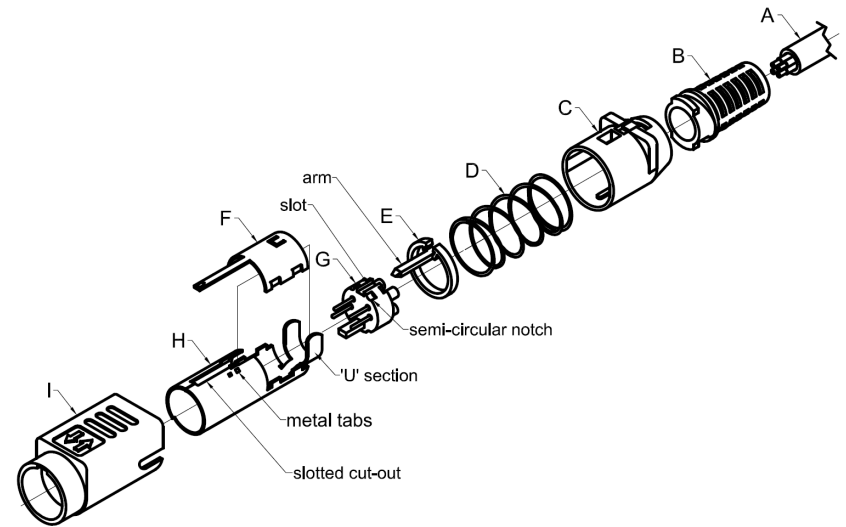
KMDLAX Series

Dimensions in mm



Assembly Instructions

- 1) Attach *Strain Relief (B)* to *Rear Housing (C)*.
- 2) Pass *Cable (A)* through *Strain Relief (B)/Rear Housing (C)* assembly, *Coil Spring (D)*, and *Plastic Guide (E)*.
- 3) Solder cable wires to solder cups on *Pin Block (G)*.
- 4) Properly align *Pin Block (G)* with *Lower Body (H)*. The slotted section on the top of the *Pin Block (G)* must line up with the slotted cut-out on the *Lower Body (H)* and the 4 semi-circular notches around the perimeter of the *Pin Mold (G)* must line up with the 4 metal tabs inside the *Lower Body (H)*.
- 5) Push *Pin Block (G)* forward into the *Lower Body (H)* until it locks into place.
- 6) Crimp 'U' section of *Lower Body (H)* onto *Cable (A)*.
- 7) Fit *Plastic Guide (E)* into *Lower Body (H)* by placing plastic arm into the appropriate slot on the top of the metal body.
- 8) Attach *Upper Body (F)* onto *Lower Body (H)*. Be sure to align all tabs and slots to securely install cover.
- 9) Push *Coil Spring (D)* onto the *Upper Body (F)/Lower Body (H)* assembly. This will help to hold the assembly together.
- 10) Push *Strain Relief (B)/Rear Housing (C)* assembly onto the *Upper Body (F)/Lower Body (H)* assembly. The two assemblies must be properly aligned as shown in the drawing. Be sure to check that the *Coil Spring (D)* remains in place and does not go underneath either the *Rear Housing (C)* or the *Plastic Guide (E)* or twists during assembly. A significant amount of force may be necessary to lock the two assemblies together.
- 11) Press metal tab located on *Upper Body (F)* into gap in *Rear Housing (C)*.
- 12) Check to make sure that the *Strain Relief (B)/Rear Housing (C)* assembly is securely locked into place over the *Upper Body (F)/Lower Body (H)* assembly. The two assemblies should not be able to be pulled apart.
- 13) Properly align the new assembly with the *Forward Housing (I)* as shown in the drawing. Push assembly (twisting *Rear Housing "C"* part) into *Forward Housing (I)* until it locks properly into place. The entire plug assembly is now complete.



Parts List

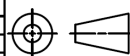
- A - Customer Cable
- B - Strain Relief
- C - Rear Housing
- D - Coil Spring
- E - Plastic Guide
- F - Upper Body
- G - Pin Block
- H - Lower Body
- I - Forward Housing



the **vital**
component

RoHS COMPLIANT
EU Directive 2002/95/EC

REV.	DATE	DESCRIPTION	REV. BY	CHK. BY	DRAWN BY	DATE
A1	09/21/05	New Drawing	H. MA	C. Furumasu	H. MA	09/21/05
A2	11/29/06	ECO #06-051	R. Aguirre	H. MA		
A3	04/30/14	ECO #14-018	W. Cook	H. MA		



UNITS
mm

KMDLAX Series Assembly

KMDLAX Series Assembly

Parts List & Instructions

